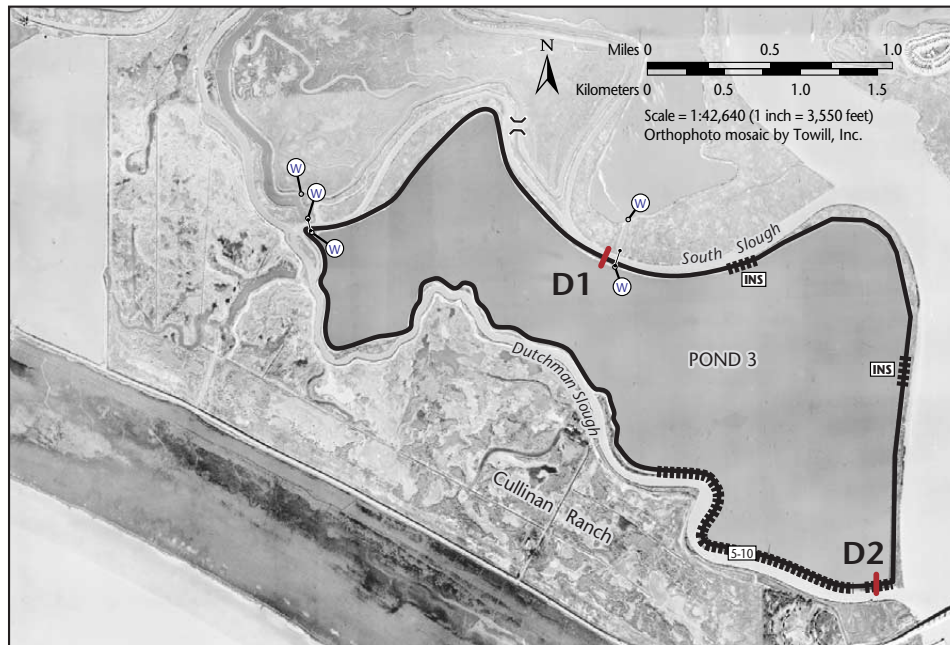


Location



About the Ditches:

In August 2002, an unknown party dug a small 2-foot wide ditch between Pond 3 and South Slough (D1). DFG subsequently obtained an emergency exemption to create a small 2-foot-wide ditch on the southeast side of Pond 3 to facilitate better circulation of water in and out of Pond 3 (D2). The initial ditch was not repaired because of the cost of filling in the ditch and because the pond may be breached in the future. If adverse water quality effects are detected, the ditches will be repaired.

Water Quality Sampling:

USGS started monitoring salinity and other water quality parameters soon after the ditches were created, collecting data within Pond 3 and outside the ditches. Initial salinity within the sloughs was approximately 20 parts per thousand (ppt) and within the pond was approximately 60 ppt. Pond salinity is still near 60 ppt and the ditches are having a very slow effect on salinity. No change in the salinity in the sloughs can be detected within 5-20 feet of the ditches. Additional monitoring and sampling is planned for 2003 (Schoellhame pers. com.).



Photo of D1 (August 2002)