

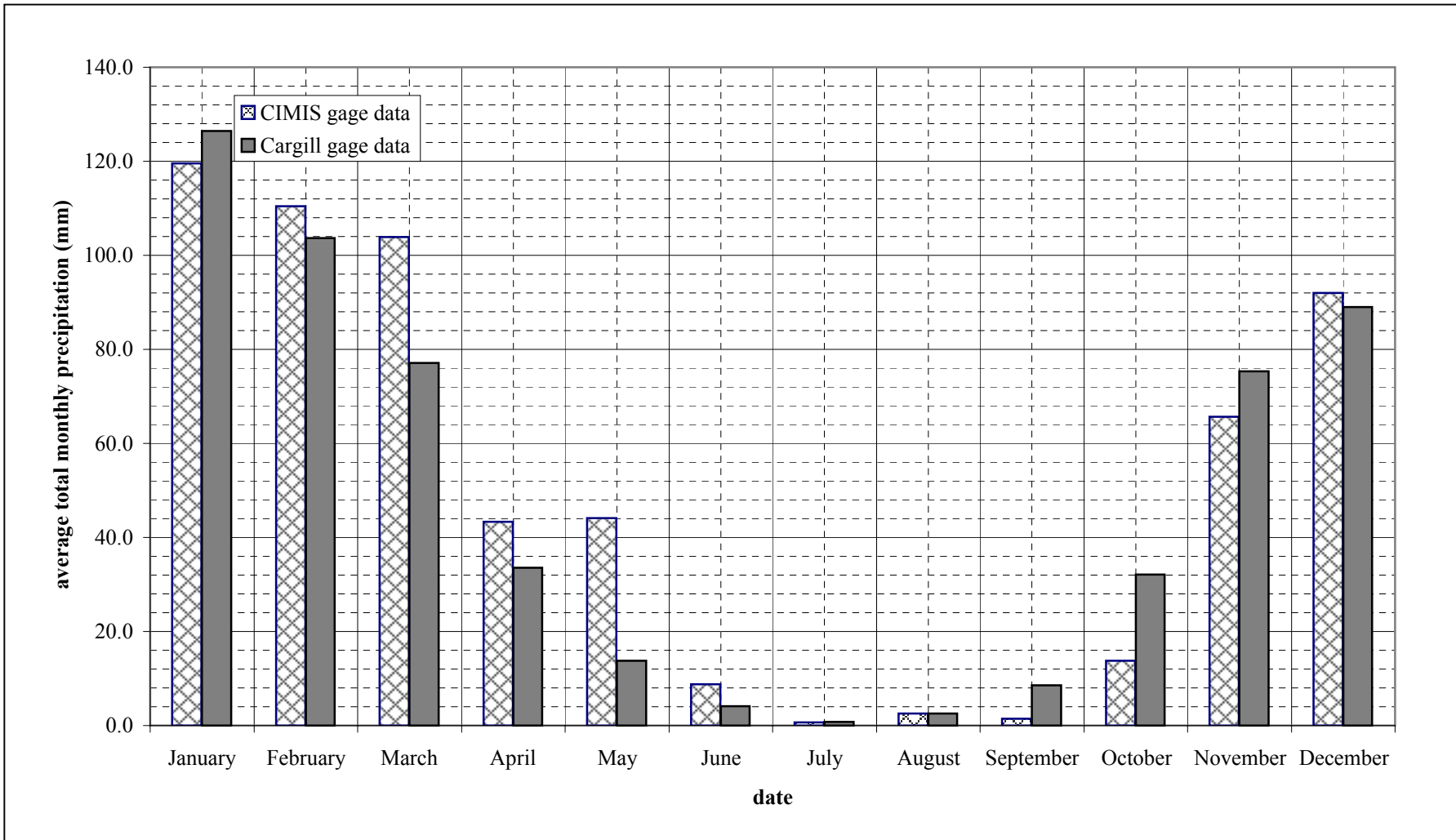
Source: DWR-CIMIS weather station #109, Carneros, CA  
 Notes: Missing data from 27-Mar-1994 to 1-Jun-1994.

*figure 5-11*

**Precipitation (CIMIS), daily  
 1993-2001**



PWA #: 1174-8



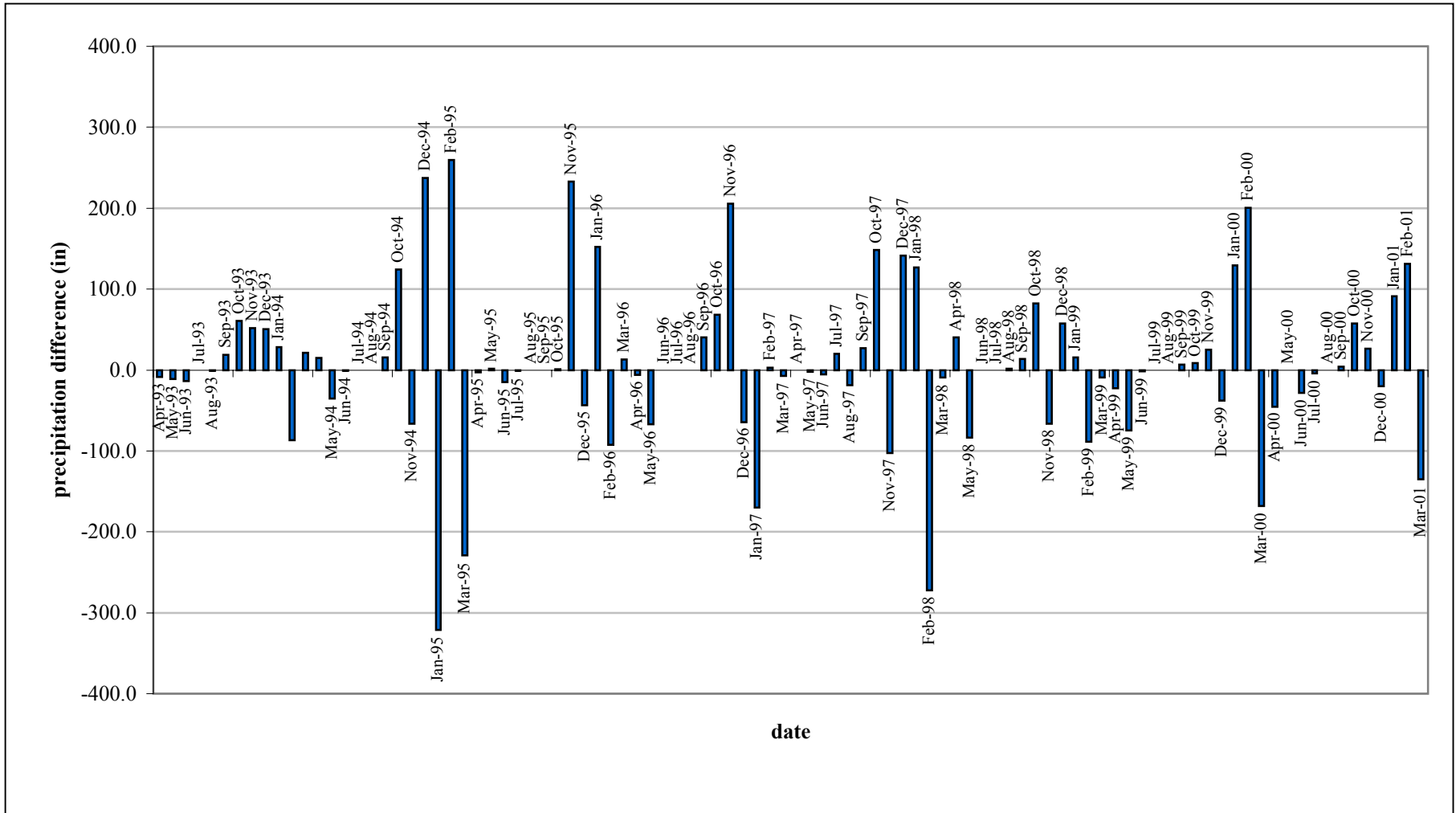
Source: DWR-CIMIS weather station #109, Carneros, CA, hourly tipping bucket rain gage data; and Cargill (Leslie Salt Co.) weather station at Napa salt ponds, daily gage data.  
 Notes:

*figure 5-12*

**Comparison of CIMIS and Cargill,  
 monthly averages of Precipitation for 1993-2001**



PWA #: 1174-8



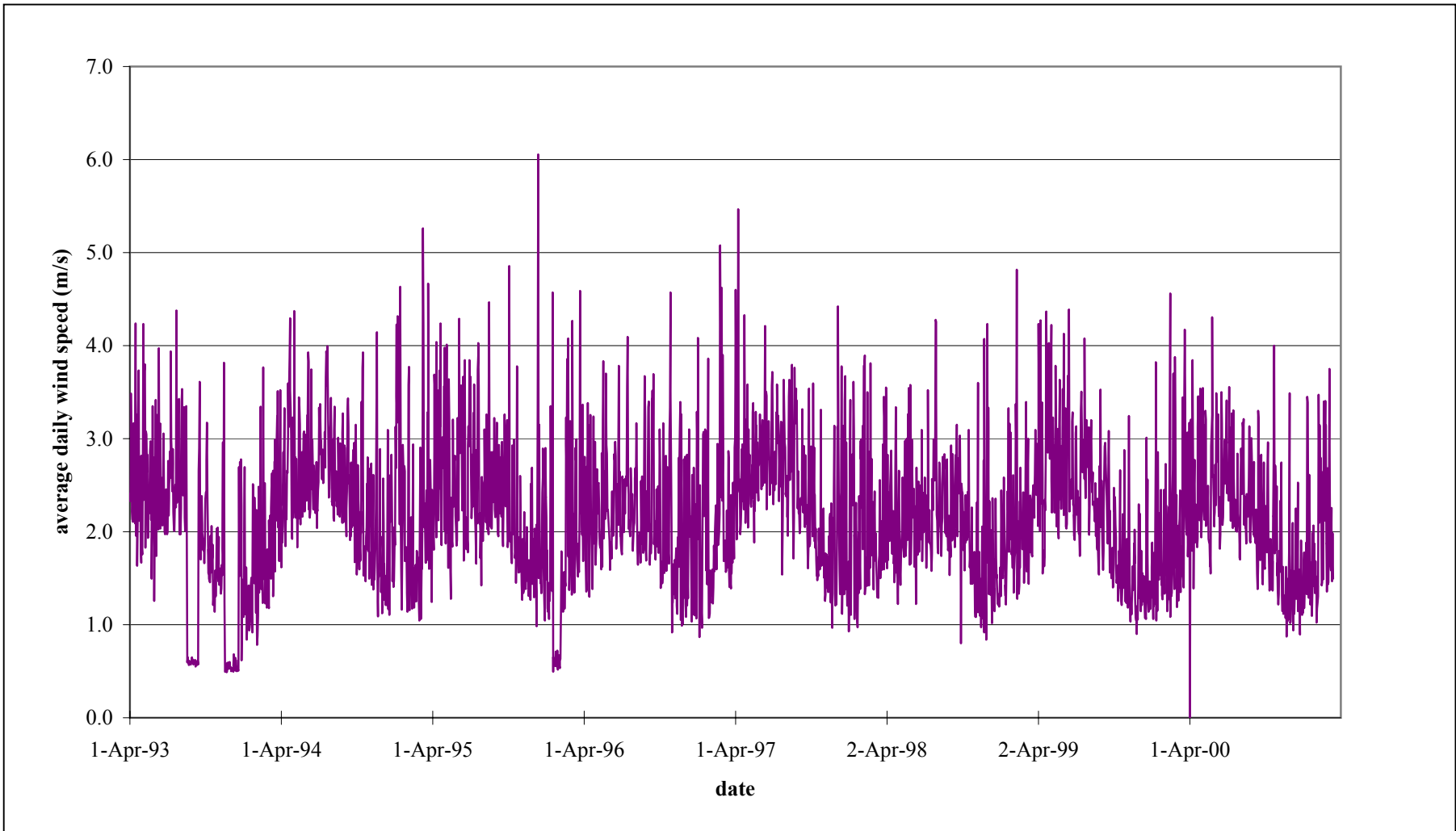
Source: DWR-CIMIS weather station #109, Cameros, CA, hourly tipping bucket rain gage data; and Cargill (Leslie Salt Co.) weather station at Napa salt ponds, daily gage data.  
Notes:

*figure 5-13*

**Comparison between observed precipitation records  
(Cargill) and computed precipitation (CIMIS):  
1993-1999**



PWA #: 1174-8




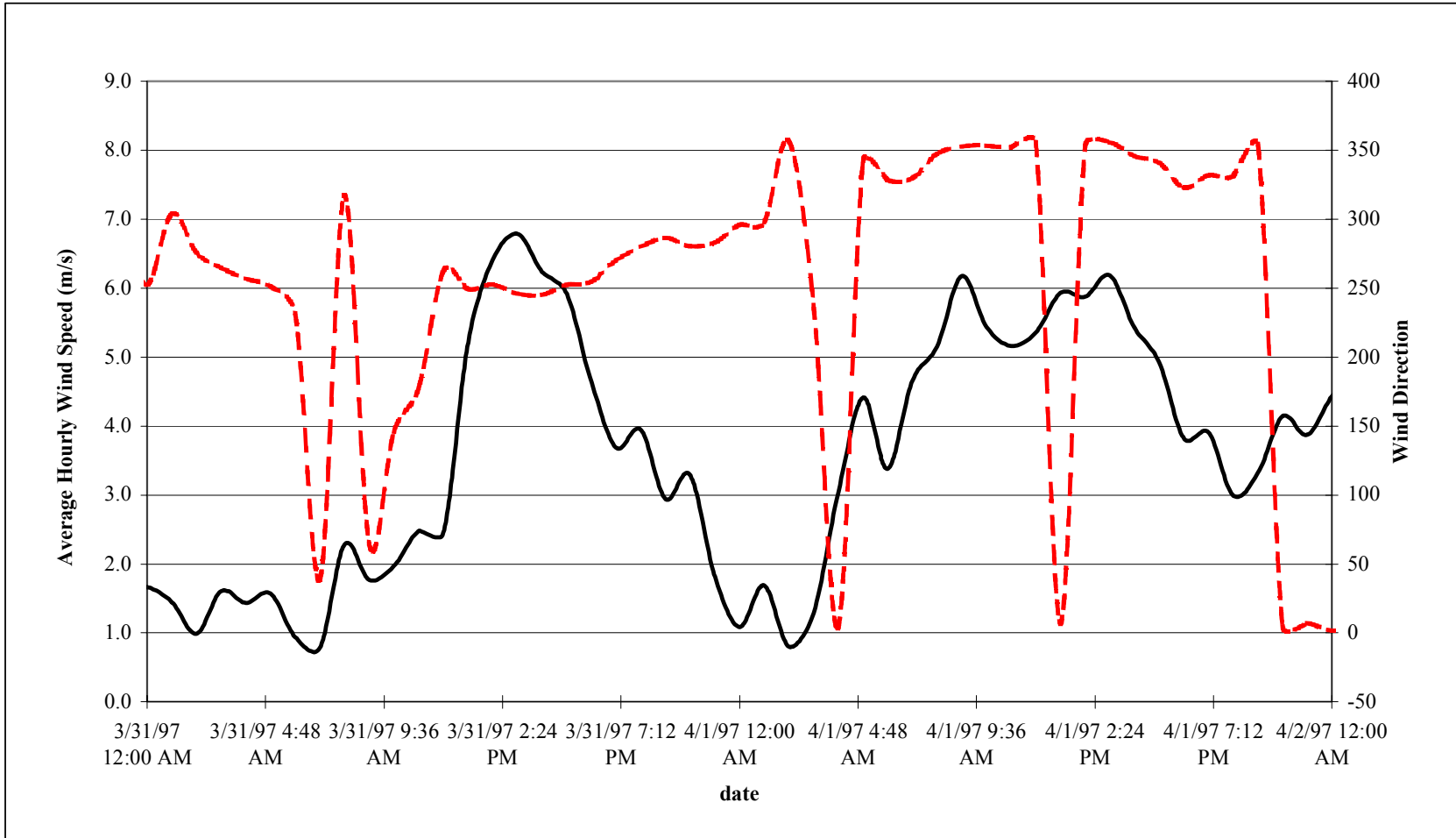
Source: DWR-CIMIS weather station #109, Carneros, CA  
 Notes:

*figure 5-14*

---

**Wind speed, daily average  
 1993-2001**

 <b>PWA</b>	PWA #: 1174-8
--	---------------



Source: DWR-CIMIS weather station #109, Carneros, CA

Notes:

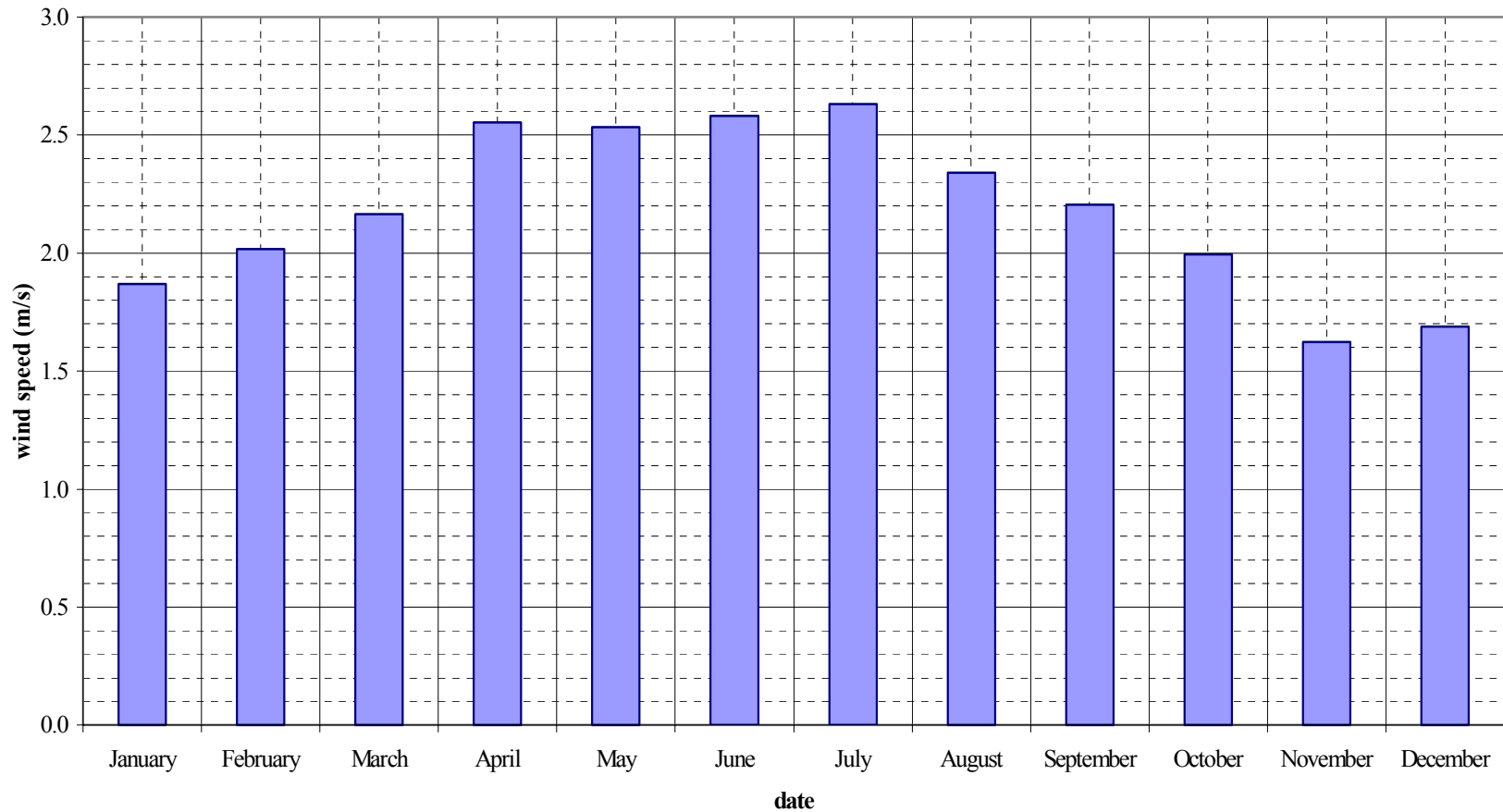
— Wind Speed    - - - Wind Direction

*figure 5-15*

**Diurnal Wind Speed over a 48-Hour Period:  
April 1997**



PWA #:



Source: DWR-CIMIS weather station #109, Carneros, CA  
 Notes:

*figure 5-16*

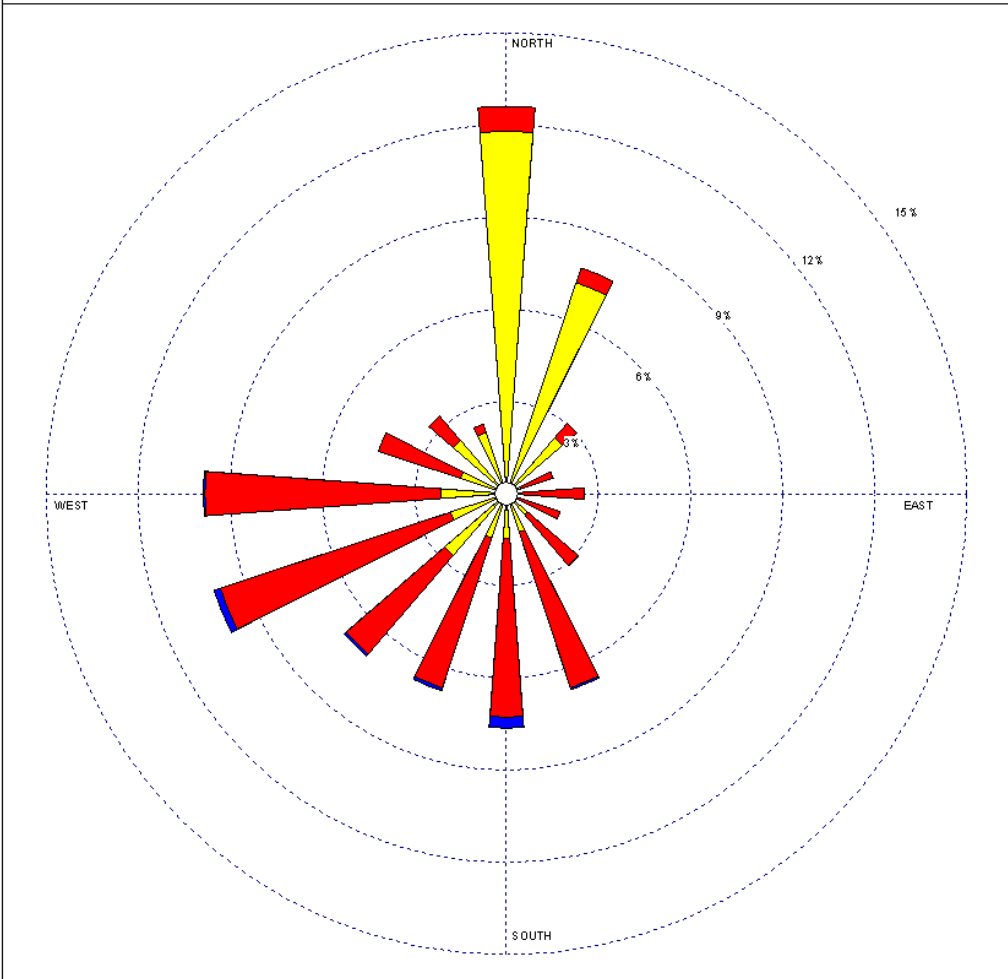
**Wind speed, monthly averages  
 averaged over 1993-2001**



PWA

PWA #1174-8

WIND ROSE PLOT  
 CIMIS Gauge - Careros -1998



Wind Speed (m/s) 	COMPANY NAME	PWA		
	DISPLAY	Wind Speed	UNIT	m/s
	AVG. WIND SPEED	1.06 m/s	CALM WINDS	9.38%
	ORIENTATION	Direction (blowing from)	PLOT YEAR-DATE-TIME	1998 Jan 1 - Dec 31 Midnight - 11 PM
COMMENTS				

WRPLOT View 3.5 by Lakes Environmental Software - www.lakes-environmental.com

*figure 5-17*

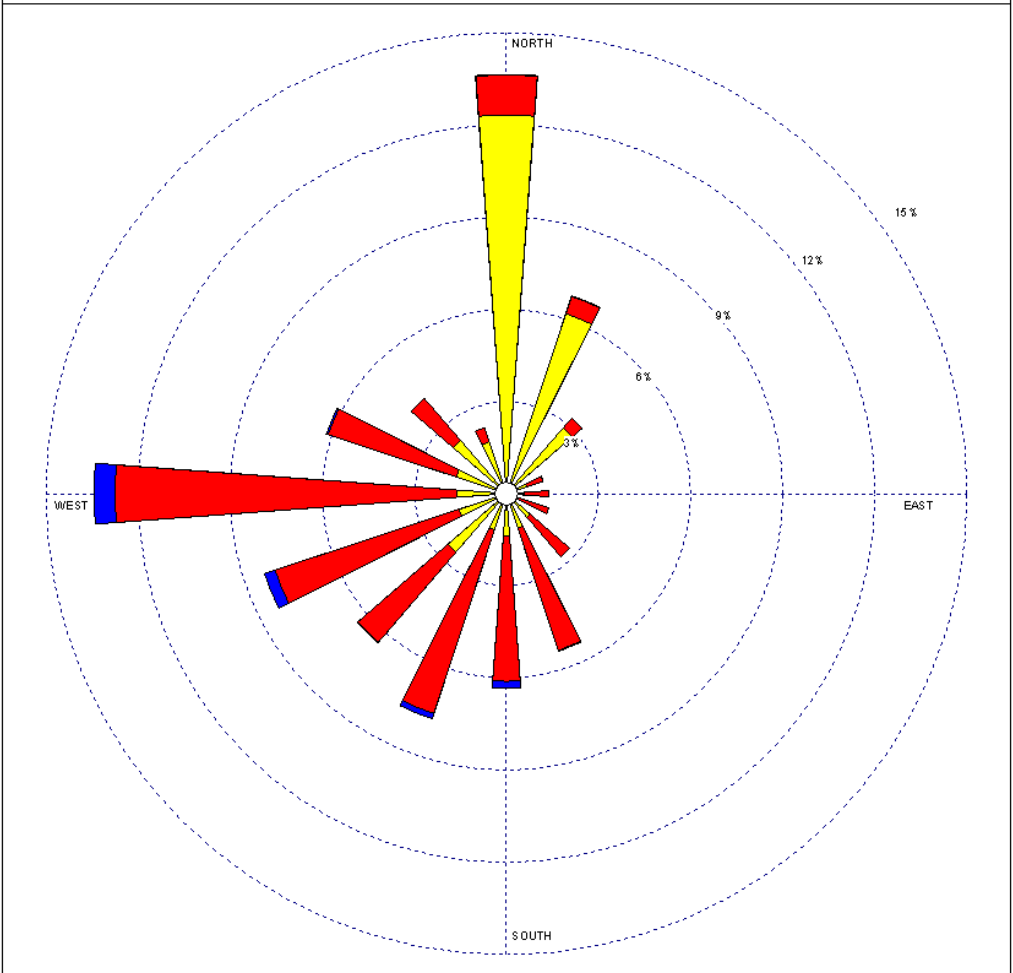
---

**Wind Rose - 1998**

---

#1174-8

WIND ROSE PLOT  
**CIMIS Gauge - Careros - 1999**



<b>Wind Speed (m/s)</b> 			COMPANY NAME <b>PWA</b>
	DISPLAY <b>Wind Speed</b>	UNIT <b>m/s</b>	COMMENTS
	AVG. WIND SPEED <b>1.13 m/s</b>	CALM WINDS <b>9.31%</b>	
	ORIENTATION <b>Direction (blowing from)</b>	PLOT YEAR-DATE-TIME <b>1999 Jan 1 - Dec 31 Midnight - 11 PM</b>	

WRPLOT View 3.5 by Lakes Environmental Software - www.lakes-environmental.com

*figure 5-18*

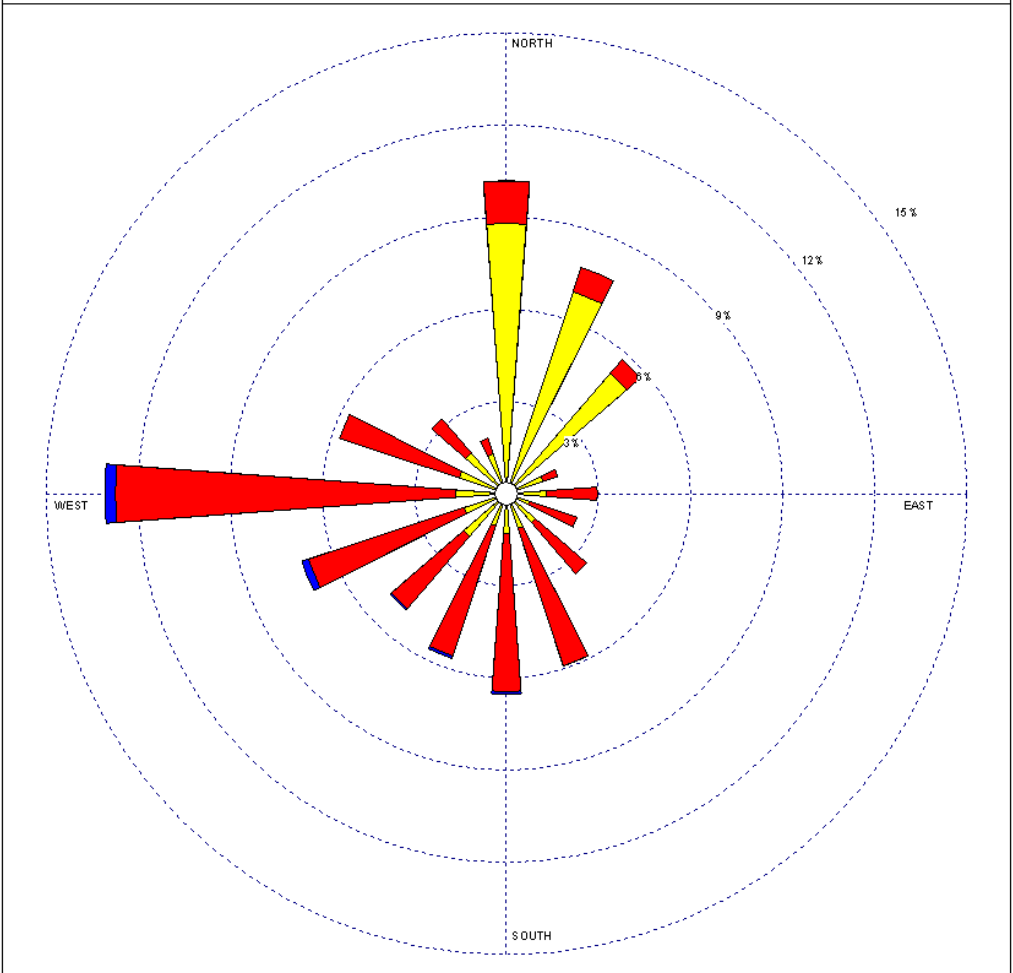
---

**Wind Rose - 1999**

---

#1174-8

WIND ROSE PLOT  
**CIMIS Gauge - Careros - 2000**



<b>Wind Speed (m/s)</b> 			COMPANY NAME <b>PWA</b>
	DISPLAY <b>Wind Speed</b>	UNIT <b>m/s</b>	COMMENTS
	AVG. WIND SPEED <b>1.10 m/s</b>	CALM WINDS <b>11.62%</b>	
	ORIENTATION <b>Direction (blowing from)</b>	PLOT YEAR-DATE-TIME <b>2020 Jan 1 - Dec 31 Midnight - 11 PM</b>	

WRPLOT View 3.5 by Lakes Environmental Software - www.lakes-environmental.com

*figure 5-19*

---

**Wind Rose - 2000**

---

#1174-8