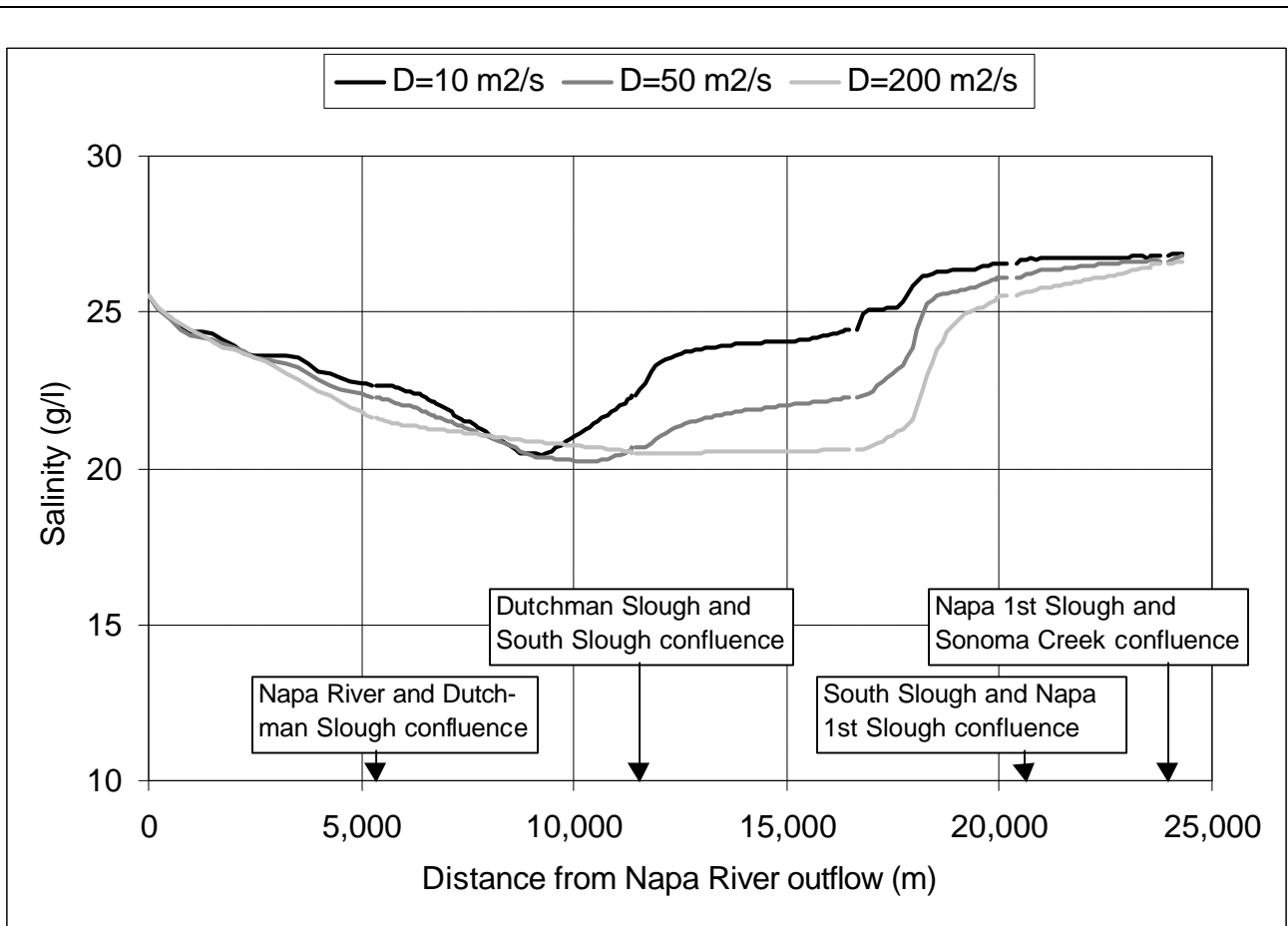


Three salinity profiles are sketched for an idealized situation with no flow.

figure 7-21

Illustration of the significance of the dispersion coefficient D

Source: 1411-12#



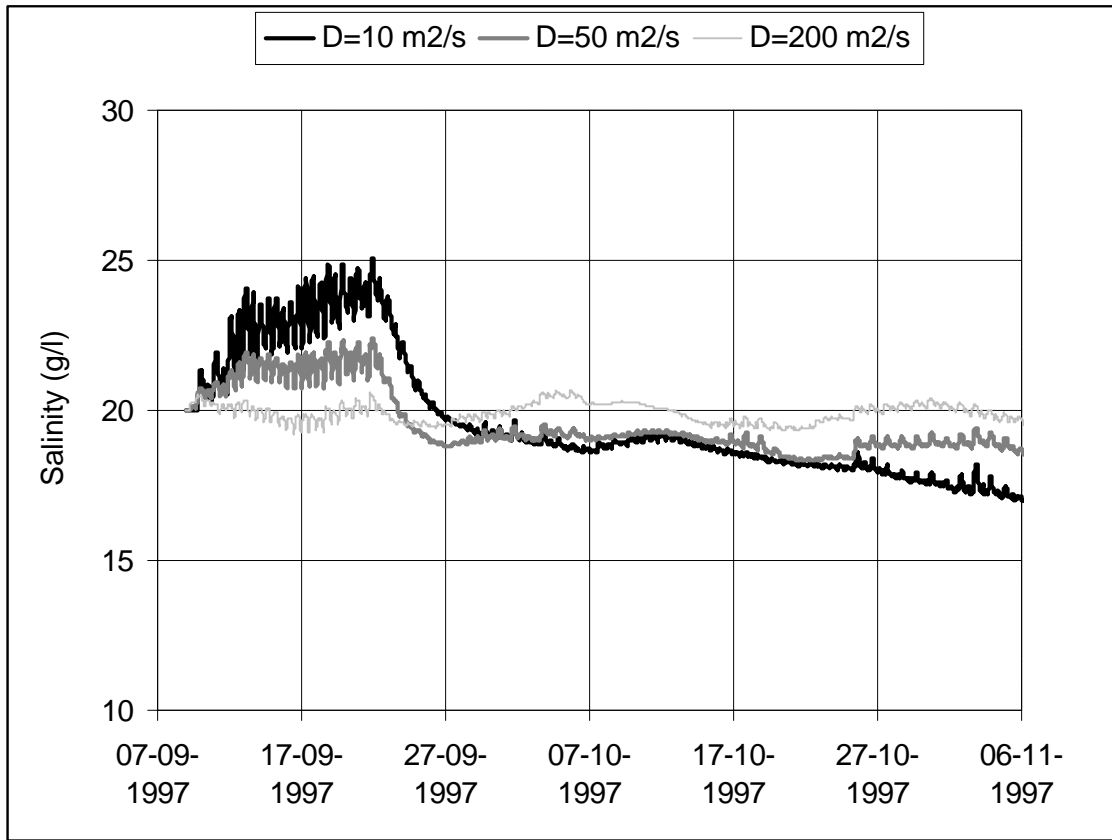
The vertical shows the maximum simulated salinity during Sep 97 - Mar 98.

The horizontal axis is distance along a profile through Napa River, Dutchman Slough, South Slough, Napa 1st Slough and Sonoma Creek.

figure 7-22

Salinity sensitivity to dispersion coefficient

1411-12#

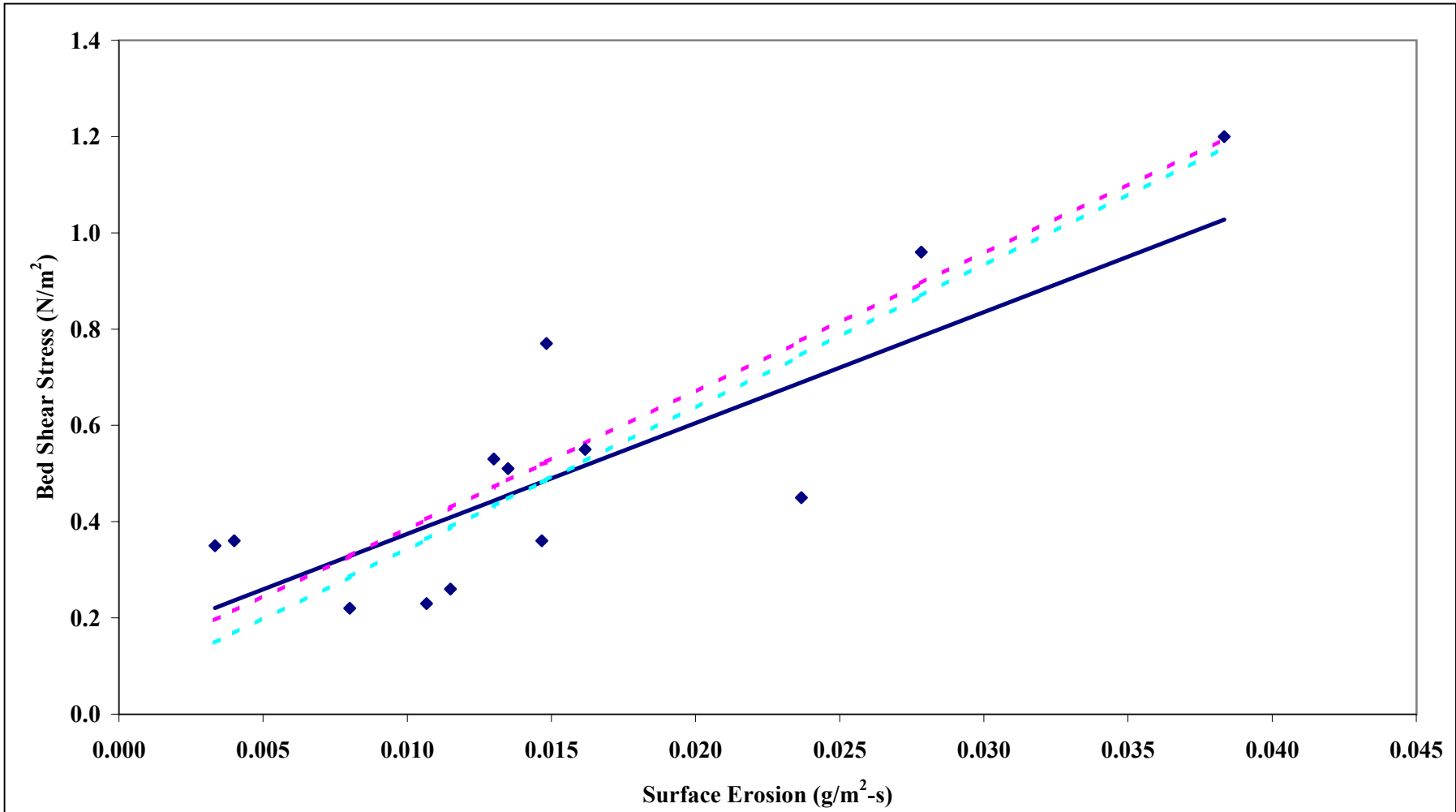


Salinity at the confluence of South and China Sloughs.

figure 7-23

Salinity sensitivity to dispersion coefficient

Source: 1411-12#



- ◆ DeVries (1990)
- DeVries Best Fit
- - - tce=0.10, M*=0.0035
- - - tce=0.05, M*=0.0017

figure 7-24

NSMR Phase 1 Report

Bed Shear Stress Versus the Erosion Rate



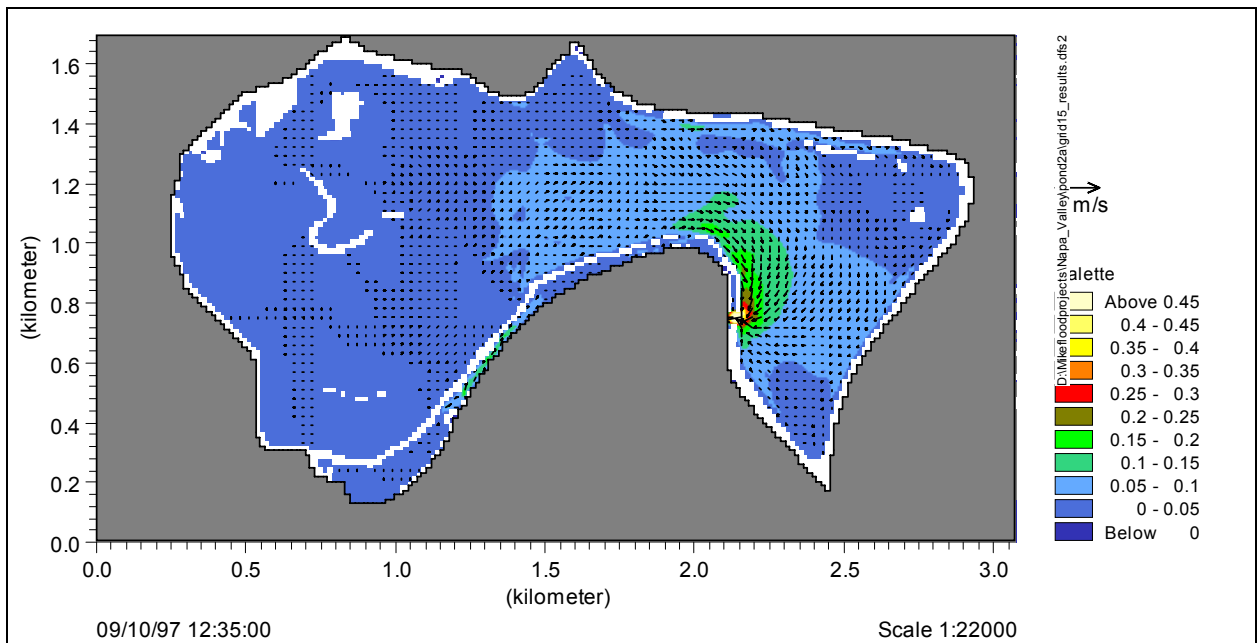
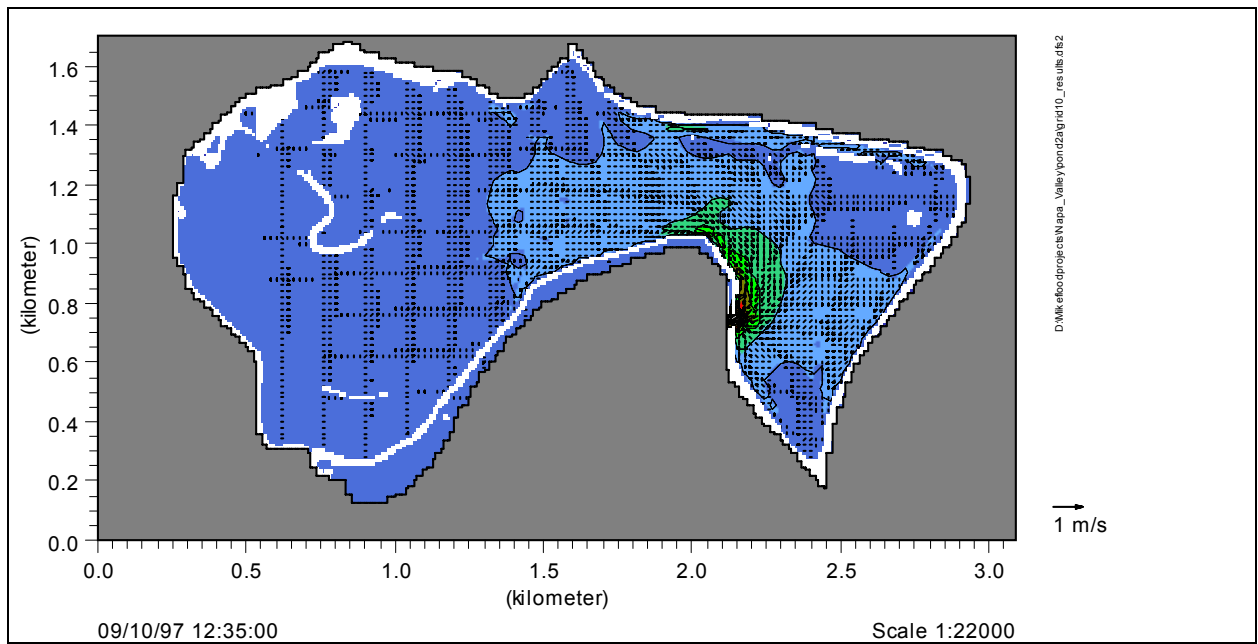


figure 7-25

**MIKE 21: Iso-surface of velocity
for 10x10m and 15x15m Grid of
Pond 2A**

Source: #1174-8

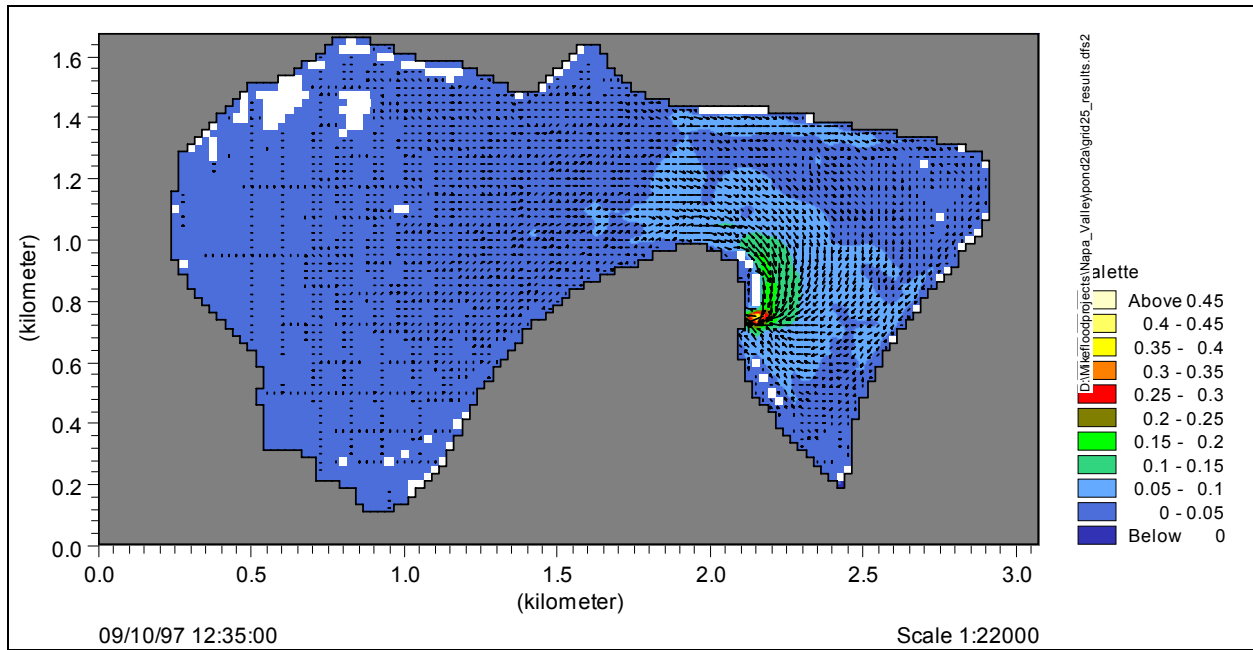


figure 7-26

**MIKE 21: Iso-surface of velocity
for 25x25m Grid of Pond 2A**

Source: #1174-8