

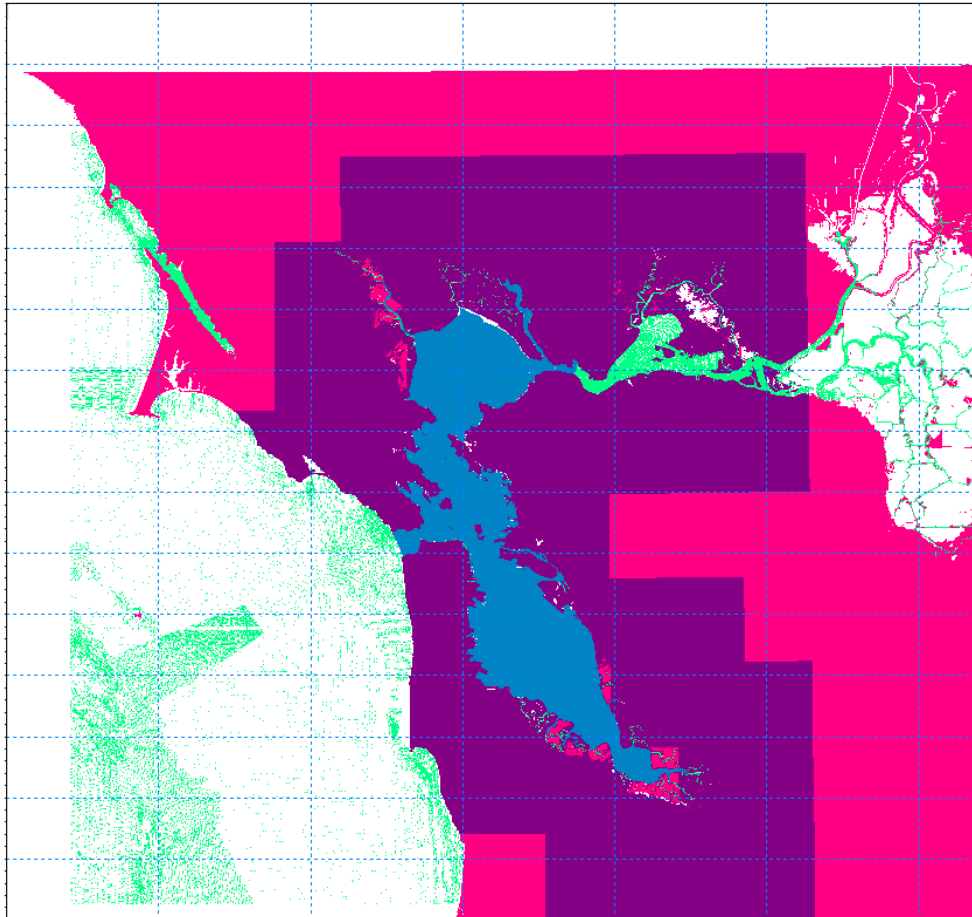
figure 4-1

Napa Sonoma Marsh Restoration Feasibility Study- Phase 2 Stage 1

Schematic of Grid Nesting



PWA ref
#1545-46



Legend
 USGS DEM - 30m
 USGS DEM - 10m
 NOS Surveys
 NOAA DEM - 30m
 missing

Source: NOAA, USGS

figure 4-2

Napa-Sonoma Marsh Restoration Feasibility Study- Phase 2 Stage 1

Bathymetry Data Coverage



PWA ref
 #1545-46

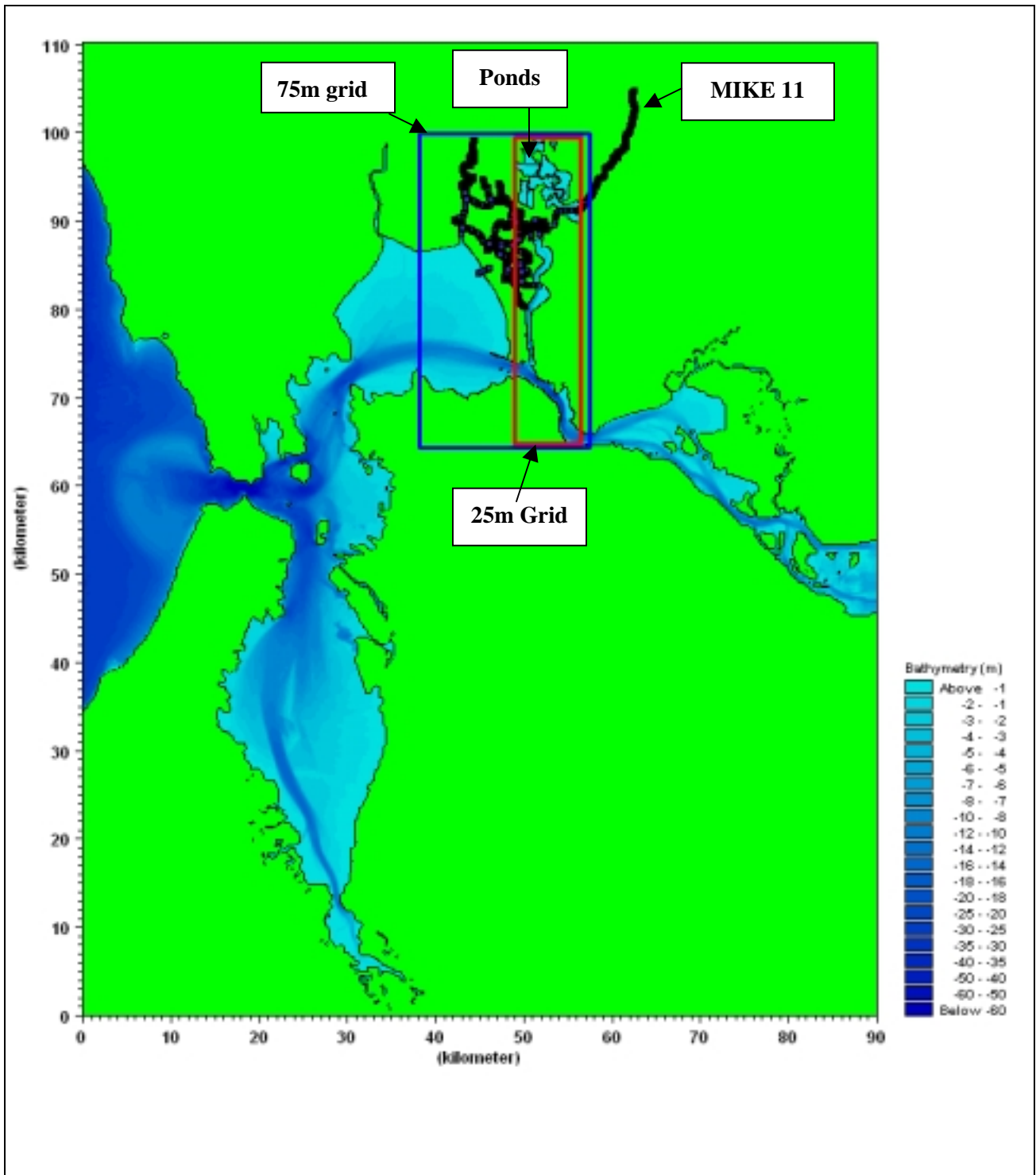


figure 4-3

Napa Sonoma Marsh Restoration Feasibility Study- Phase 2 Stage 1
Nested Bathymetric Grids (Bay-Wide View)



PWA ref
 #1545-46

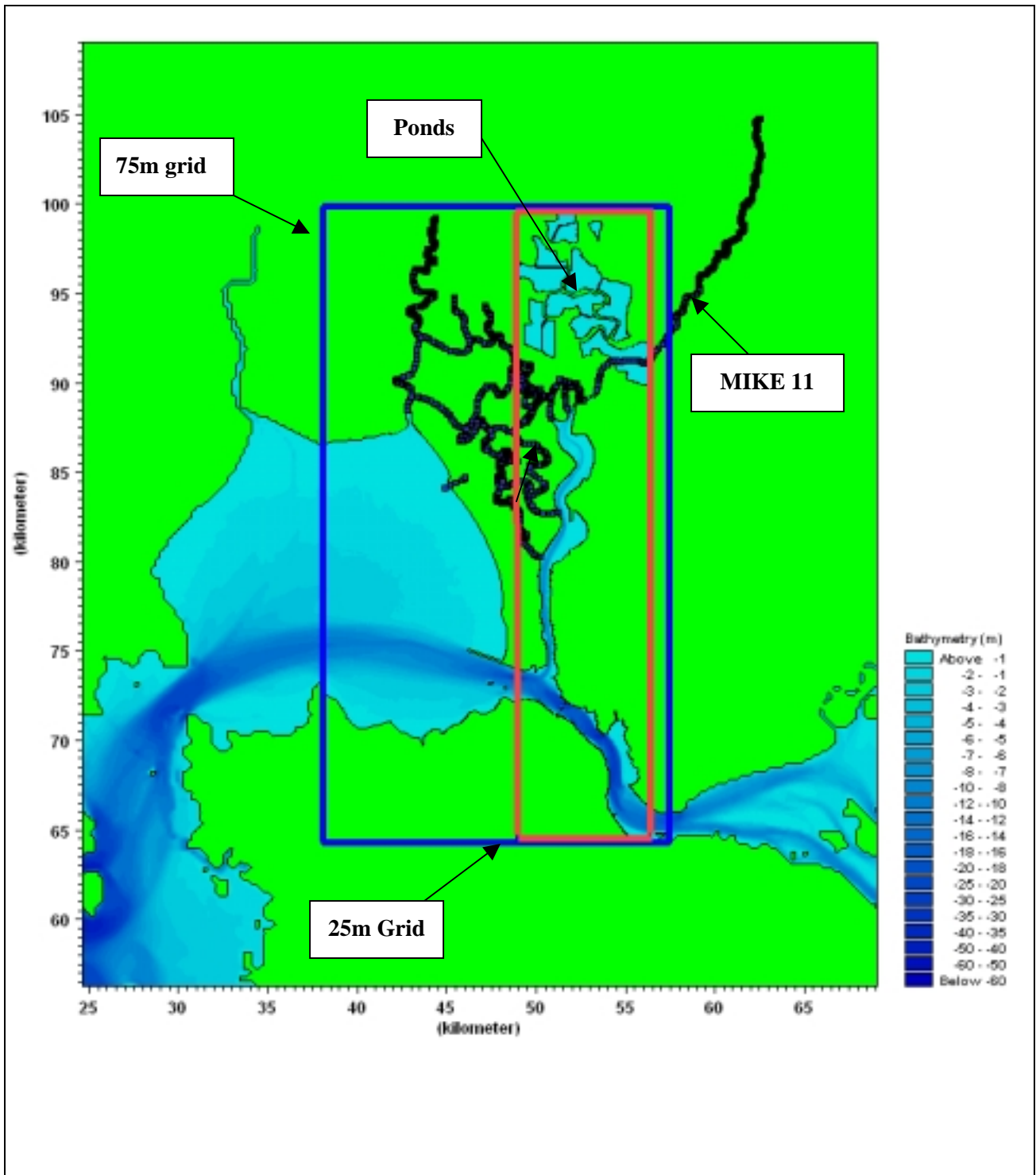


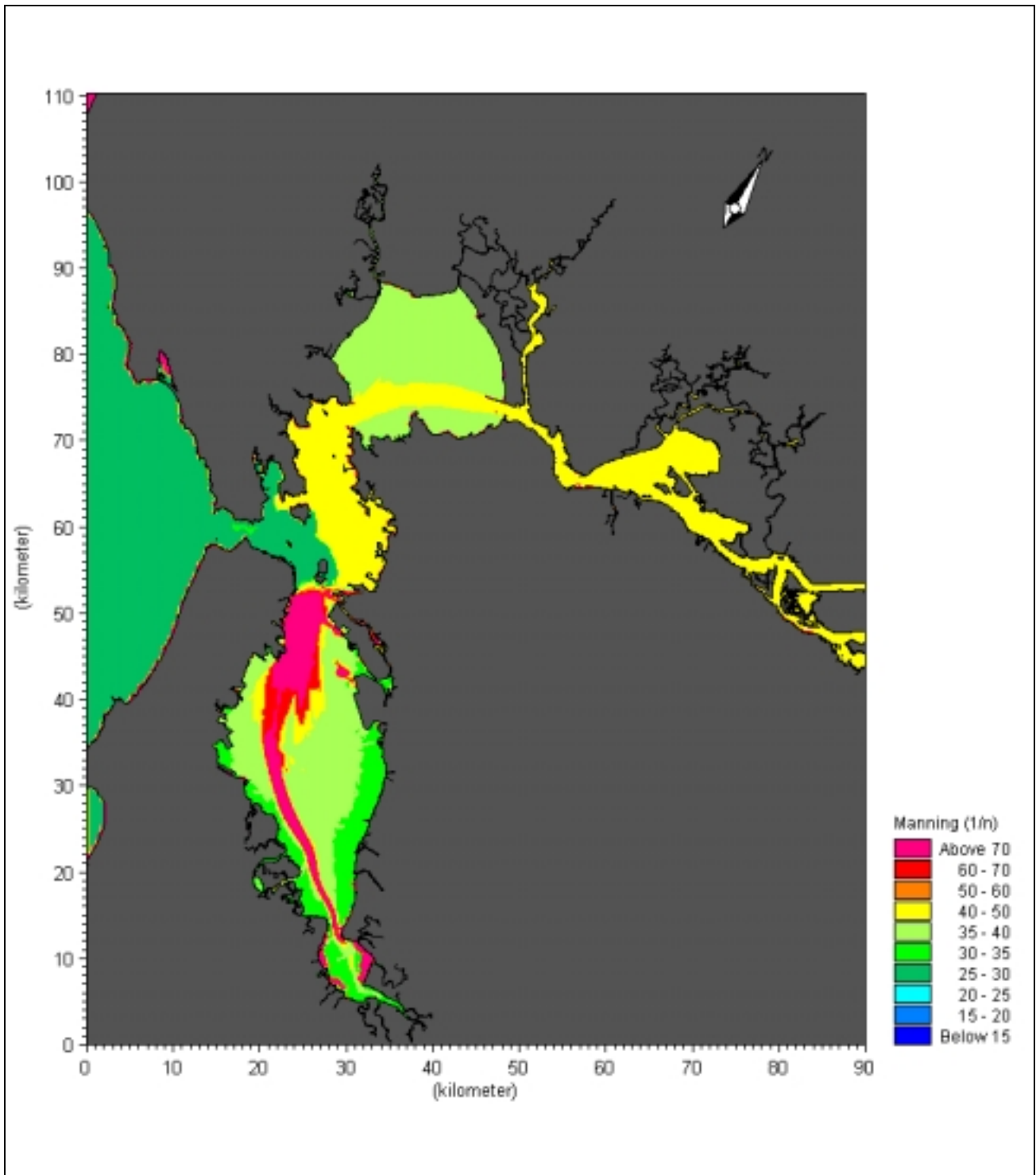
figure 4-4

Napa Sonoma Marsh Restoration Feasibility Study- Phase 2 Stage 1

**Nested Bathymetric Grids
(San Pablo Bay-Wide View)**



PWA ref
#1545-46



Note: Bed resistance is $1/n$, where n is the conventional Manning's number.

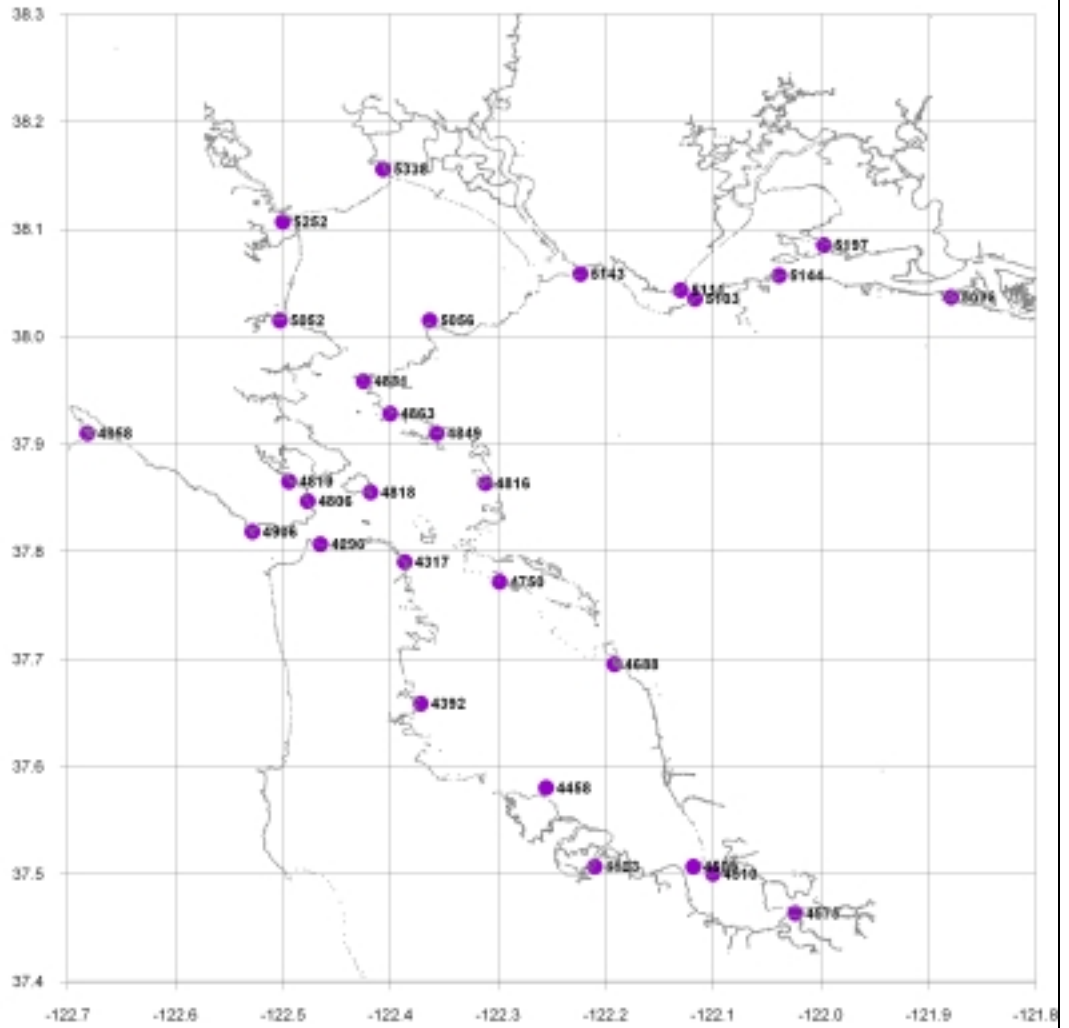
figure 4-5

Napa-Sonoma Marsh Restoration Feasibility Study- Phase 2 Stage 1

Map of Bed Resistance ($1/n$)



PWA ref
#1545-46



Source: NOAA

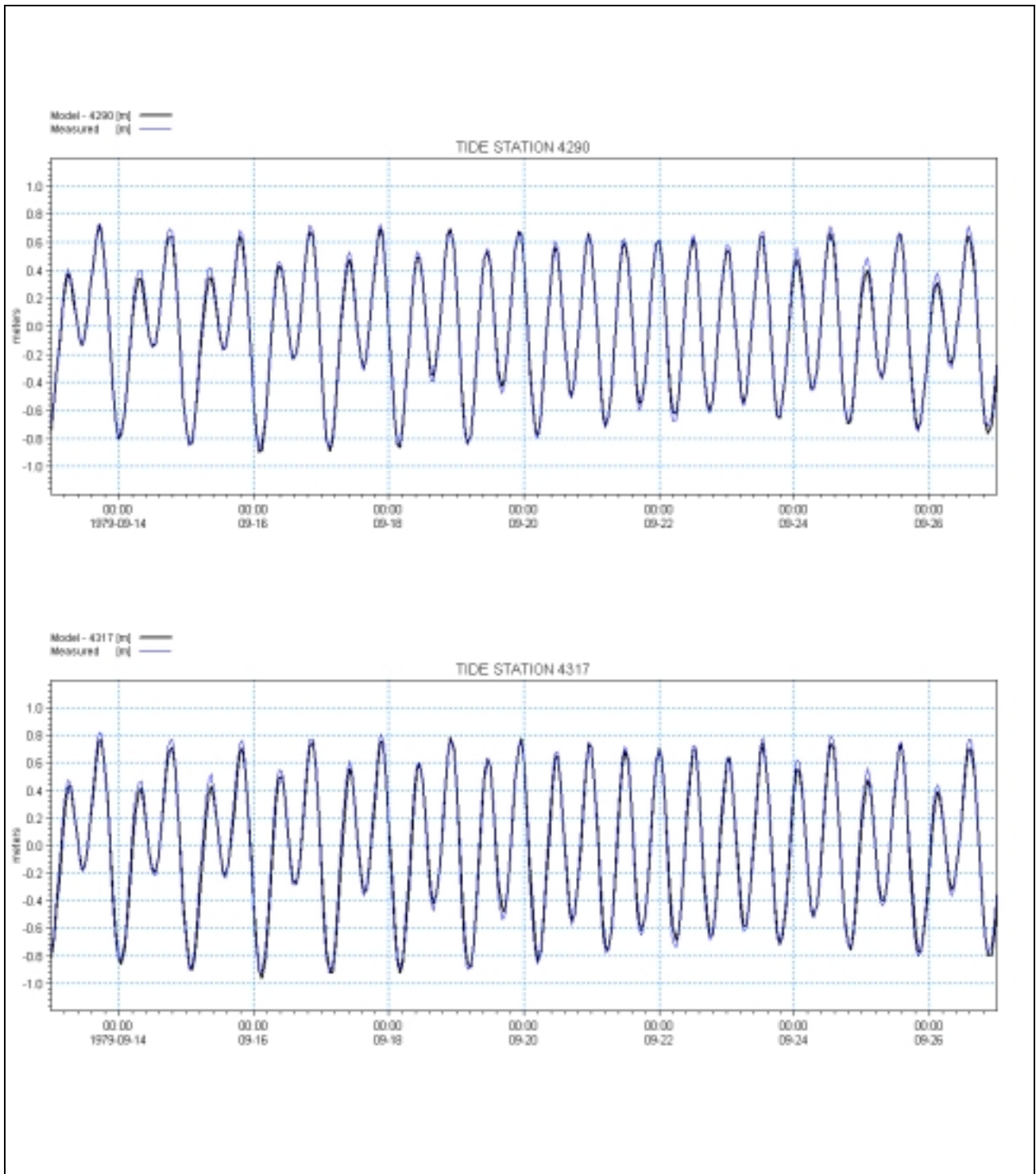
figure 4-6

Napa-Sonoma Marsh Restoration Feasibility Study- Phase 2 Stage 1

Location of Water Level Measurement Stations



PWA ref
#1545-46



Source: NOAA and numerical simulation

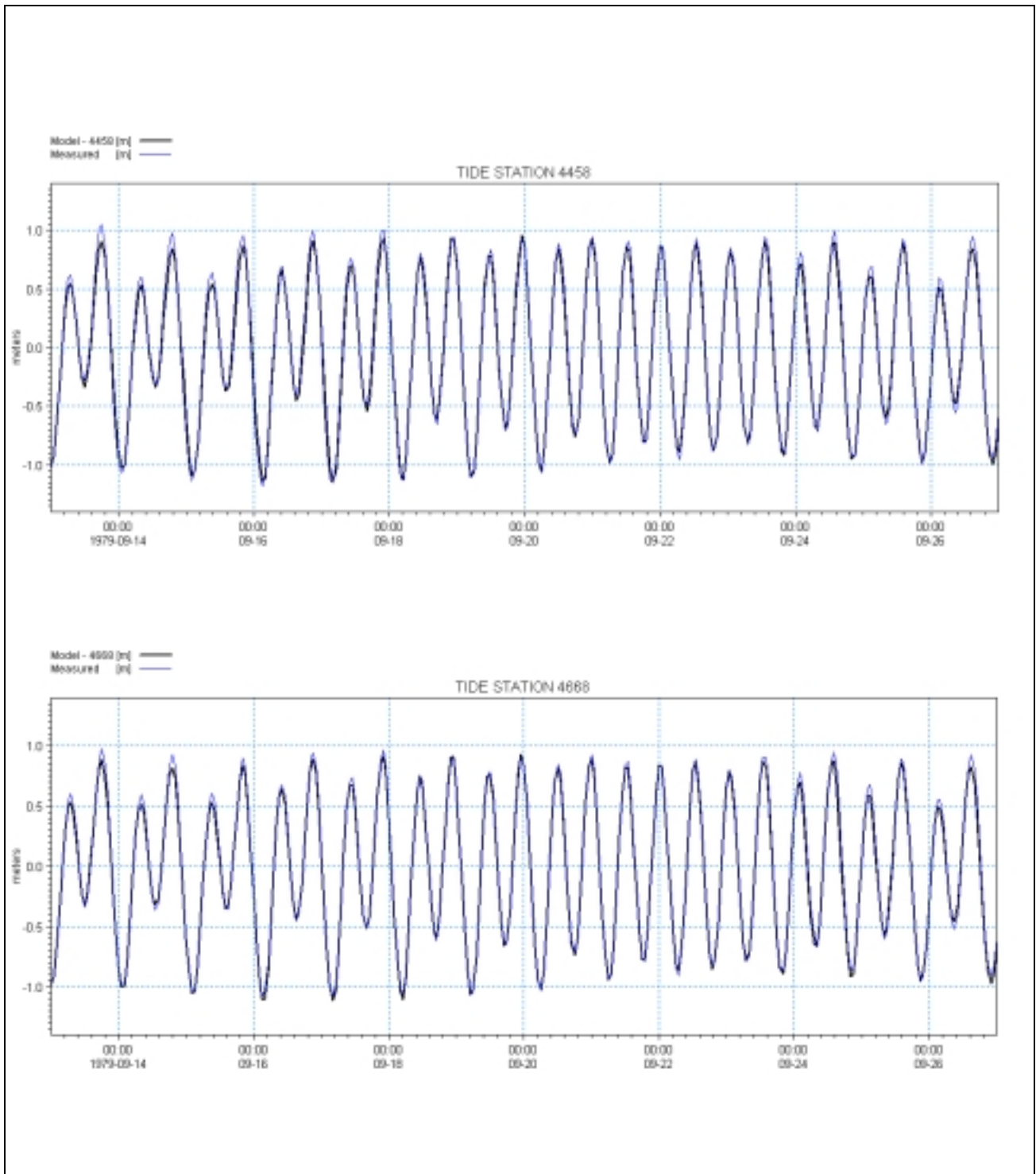
figure 4-7

Napa Sonoma Marsh Restoration Feasibility Study- Phase 2 Stage 1

Comparison of Water Level at Stations 4290 and 4317



PWA ref #1545-46



Source: NOAA and numerical simulation

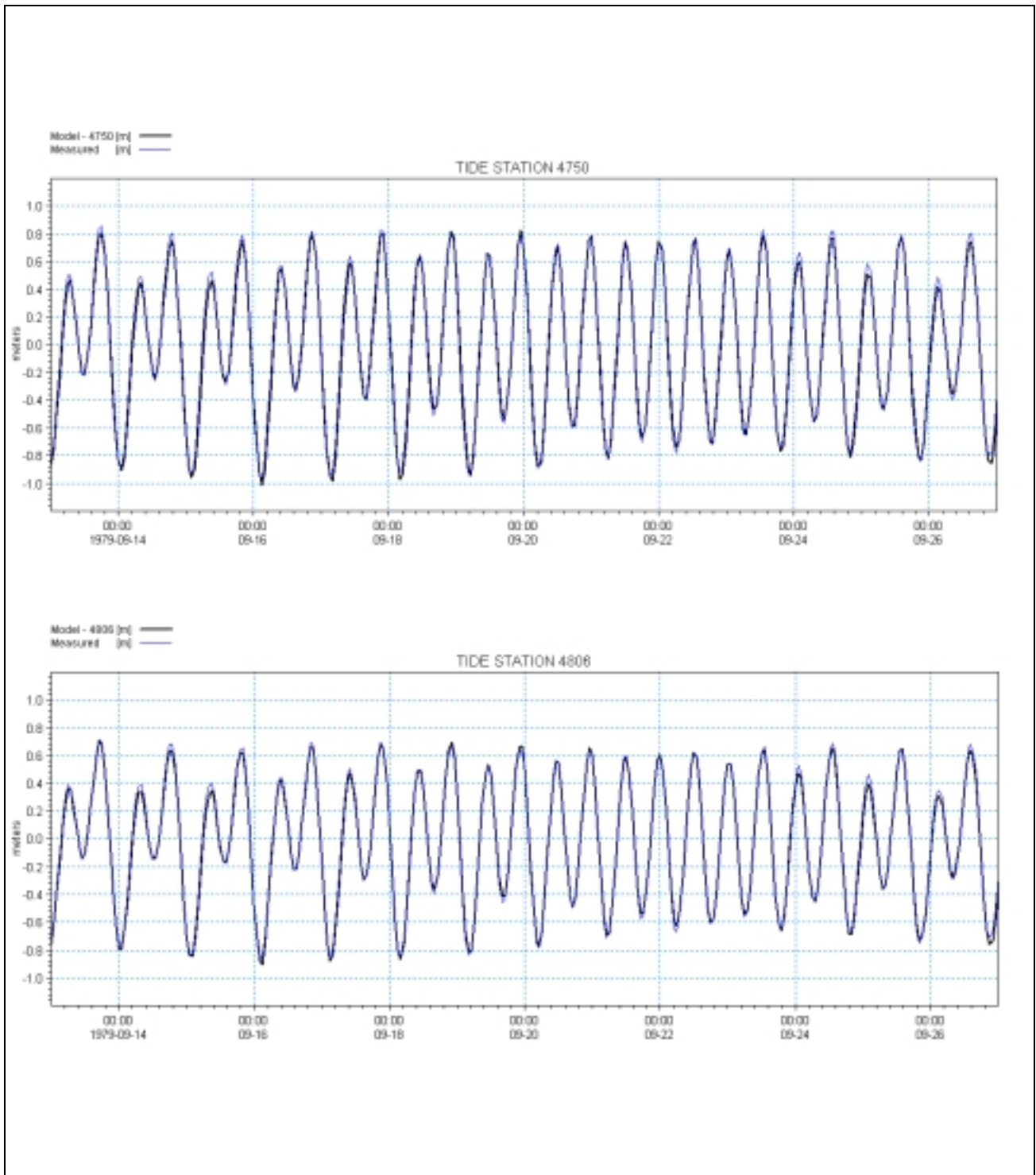
figure 4-8

Napa Sonoma Marsh Restoration Feasibility Study- Phase 2 Stage 1

**Comparison of Water Level at
Stations 4458 and 4688**



PWA ref
#1545-46



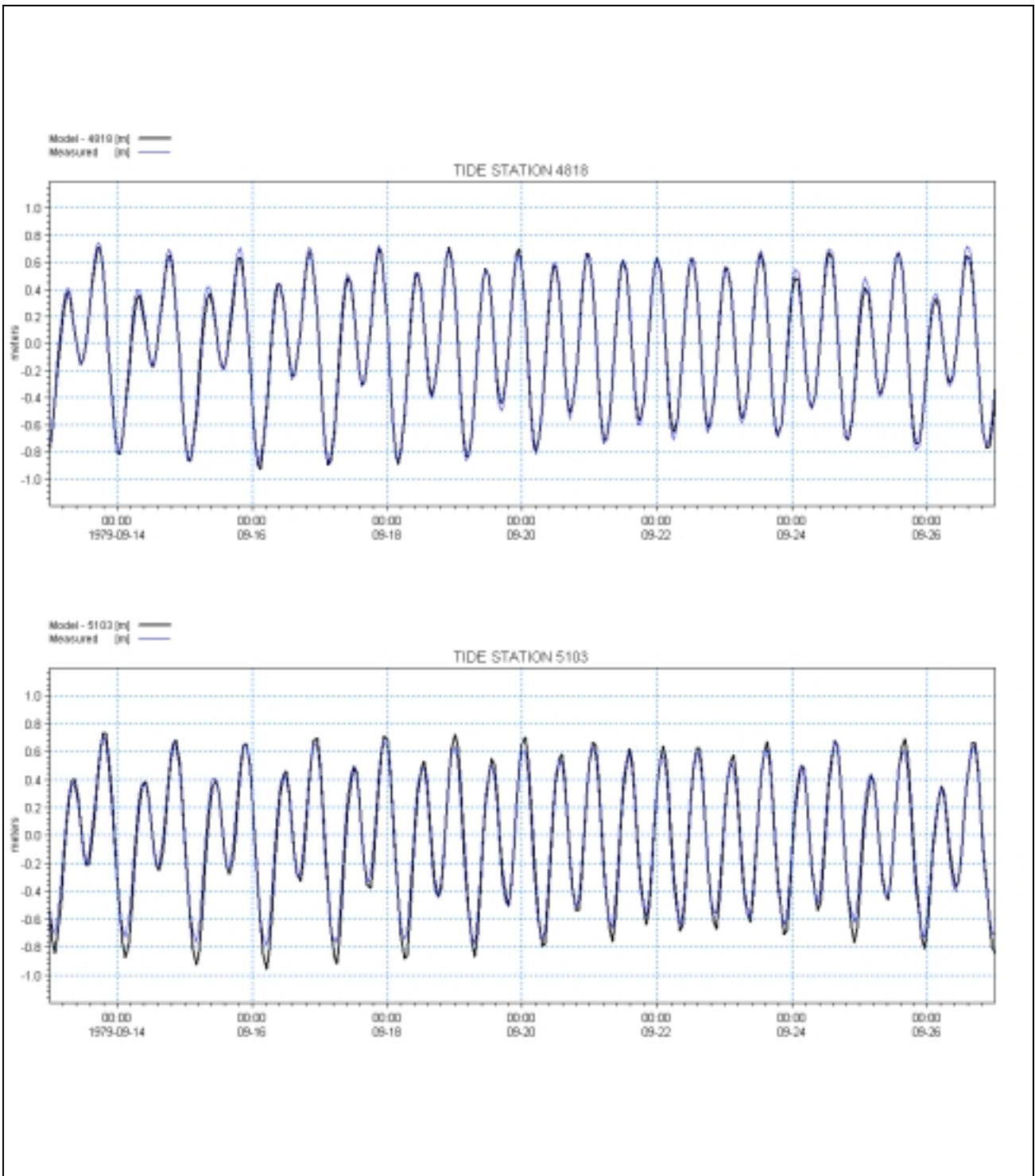
Source: NOAA and numerical simulation

figure 4-9

Napa Sonoma Marsh Restoration Feasibility Study- Phase 2 Stage 1
**Comparison of Water Level at
 Stations 4750 and 4806**



PWA ref
 #1545-46



Source: NOAA and numerical simulation

figure 4-10

Napa Sonoma Marsh Restoration Feasibility Study- Phase 2 Stage 1

Comparison Water Level at Stations 4818 and 5103



PWA ref #1545-46