



Image Source: J. C. Warner, 2001.

figure 5-1

**UC Davis / USGS Data
Monitoring Sites**

#1174-8

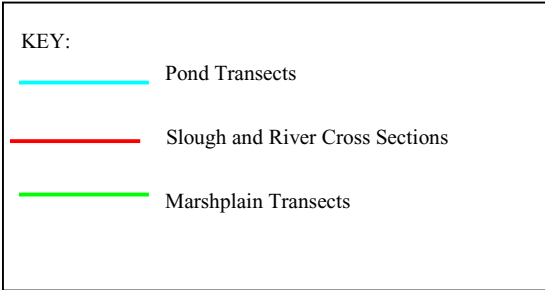
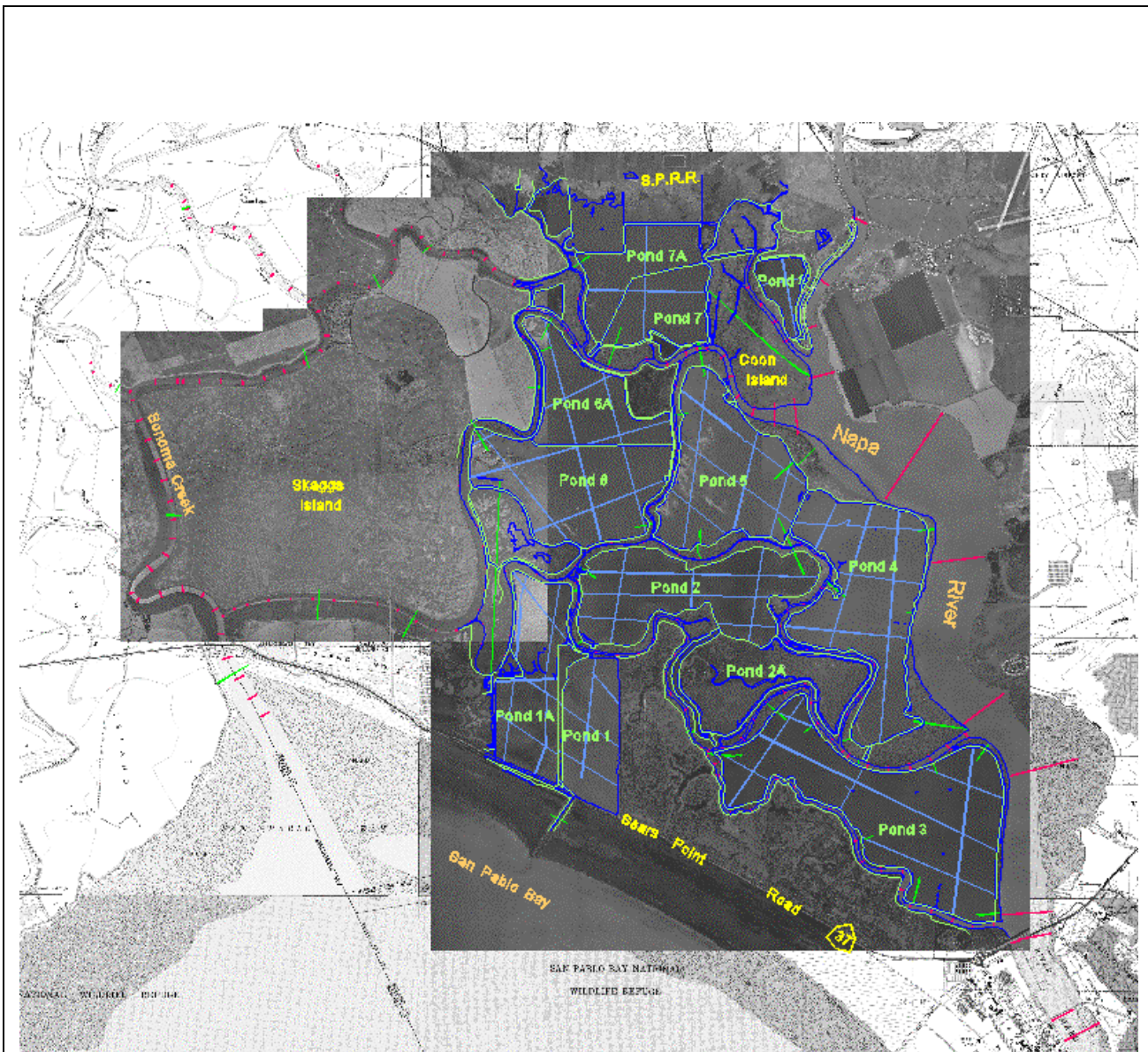


Image Source: Towill, Inc., 2001.

figure 5-2
**Surveyed Cross Sections, Marsh
 and Pond Transects**
 #1174-8

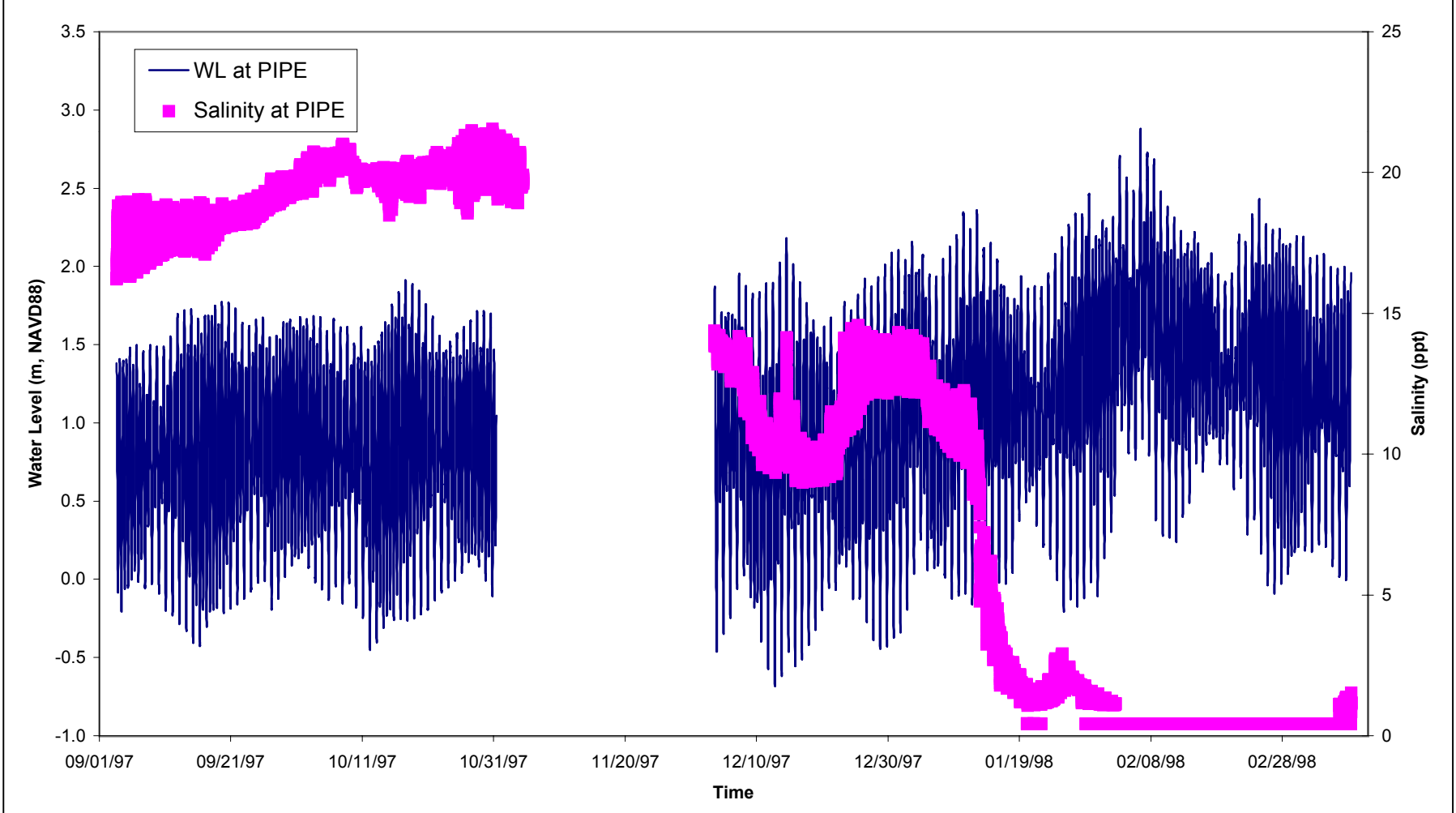
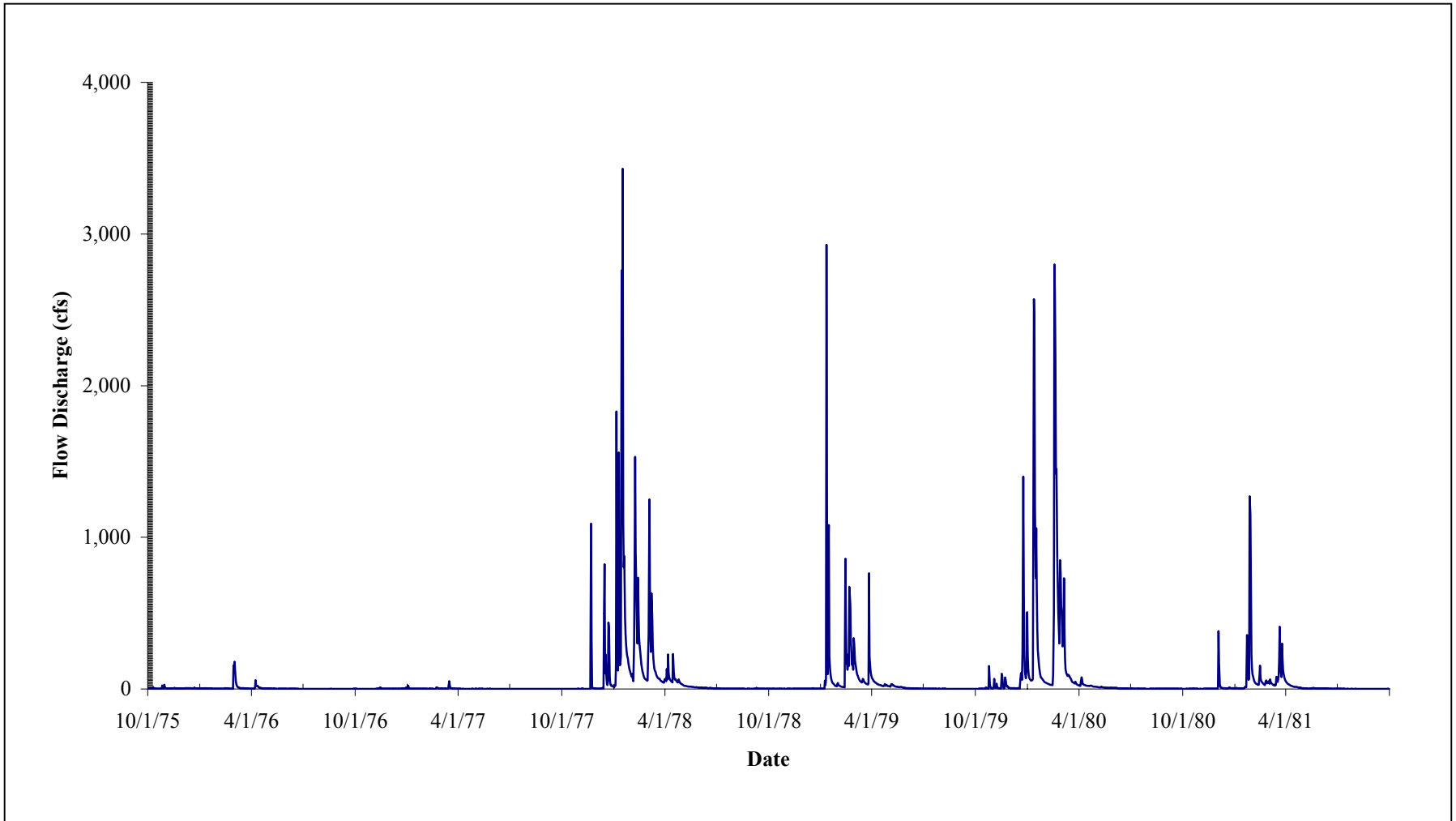


figure 5-3

Sample UC Davis Data



PWA #: 1174-8



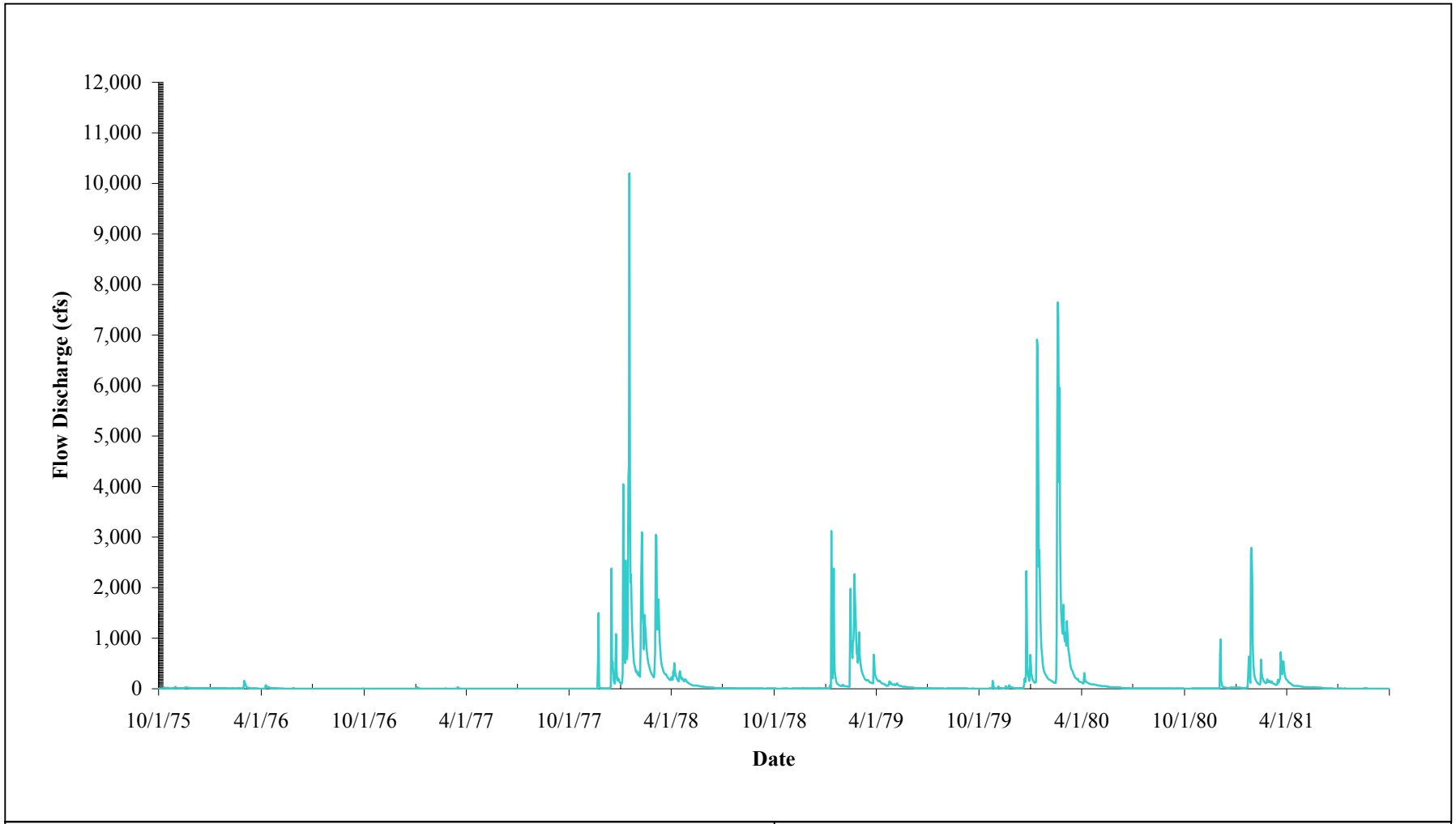
Source: USGS

figure 5-4

**Sonoma Creek at Agua Caliente
Hydrograph (1975-1981)**

PWA #: 1174-8





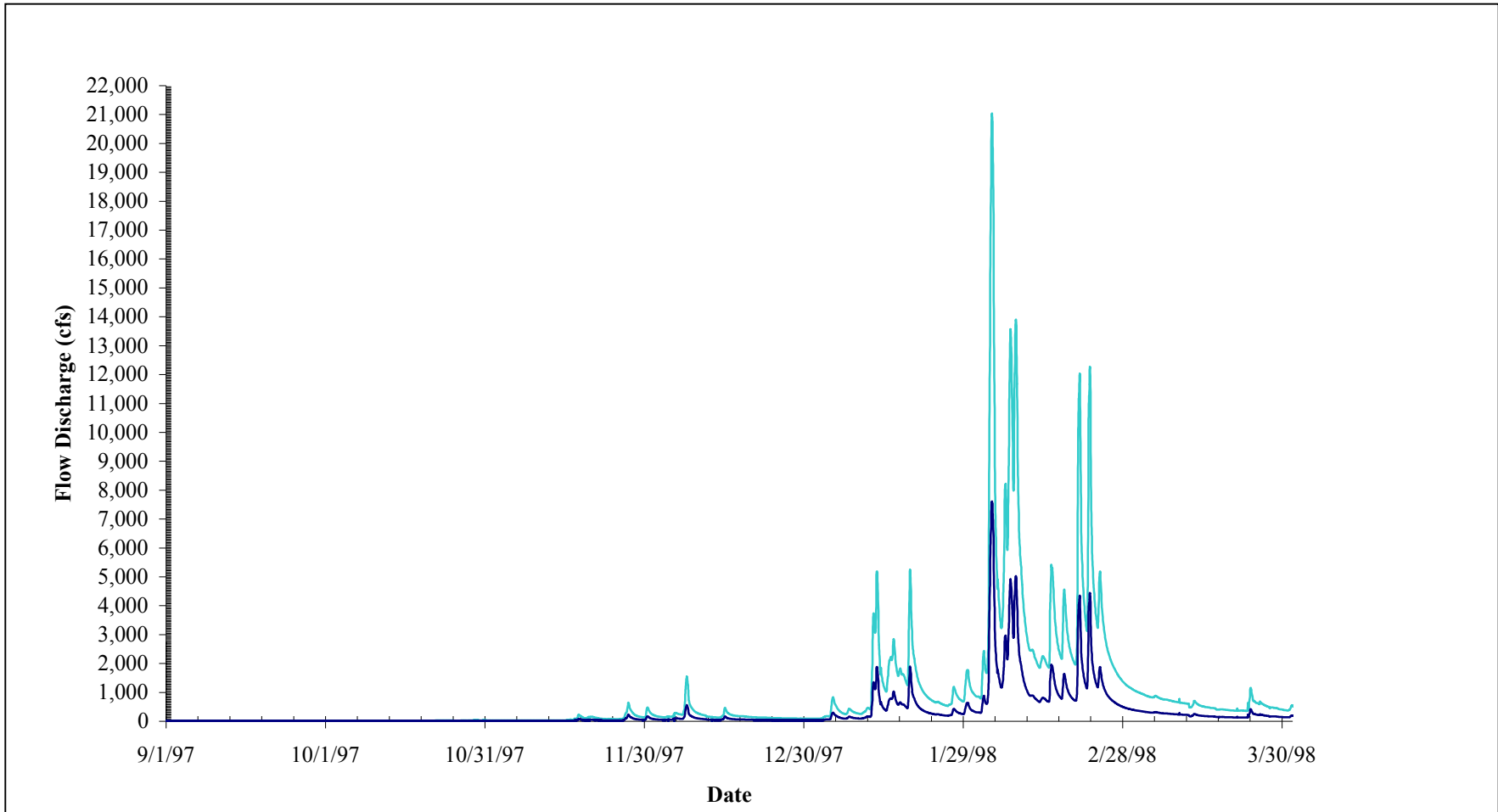
Source: USGS

figure 5-5

Napa River near Napa Hydrograph (1975-1981)

PWA #: 1174-8





Source: CDEC, PWA

- Napa River near Napa, Recorded Hourly
- Sonoma Creek at Agua Caliente, Estimated Hourly

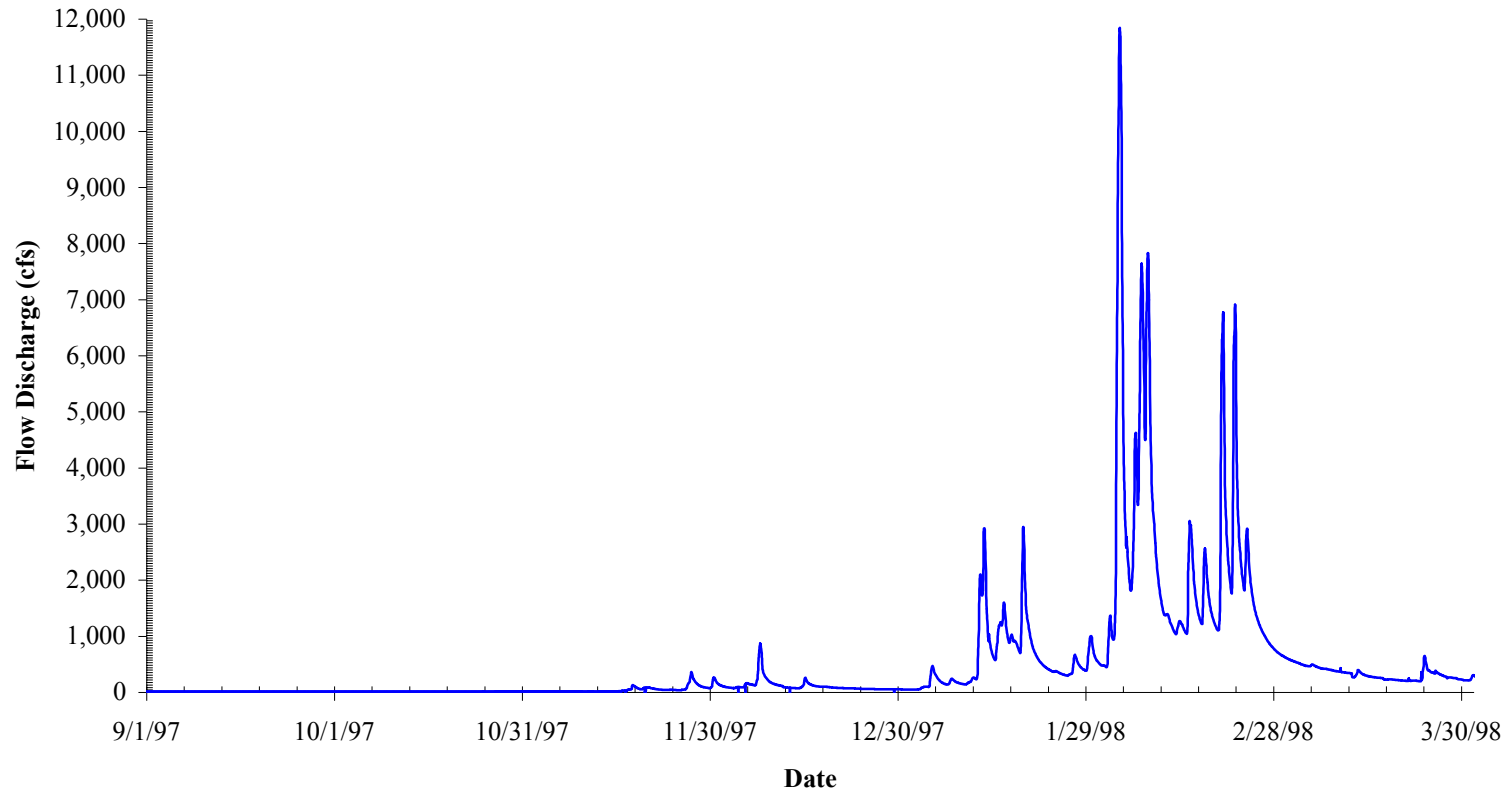
figure 5-6

**Hydrograph Estimation:
Sonoma Creek at Agua Caliente (1997-1998)**

PWA #: 1174-8



Sonoma Creek at State Highway 12/121 Bridge, Estimated Hourly



Source: PWA

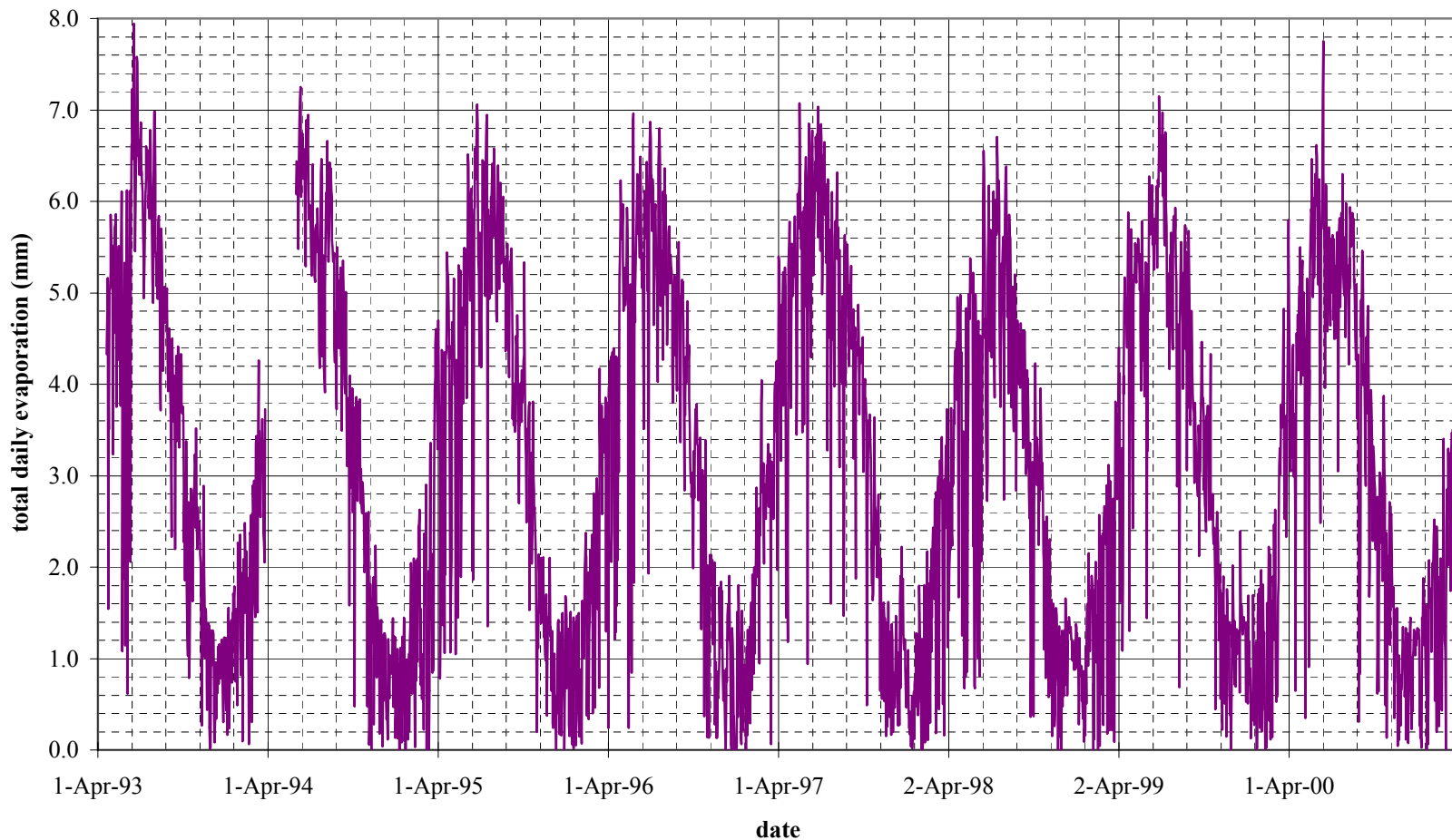
— Sonoma Creek at State Highway 12/121 Bridge,
Estimated Hourly

figure 5-7

**Hydrograph Estimation:
Sonoma Creek at Highway 12/121 Bridge (1997-1998)**

PWA #: 1174-8





Source: DWR-CIMIS weather station #109, Carneros, CA

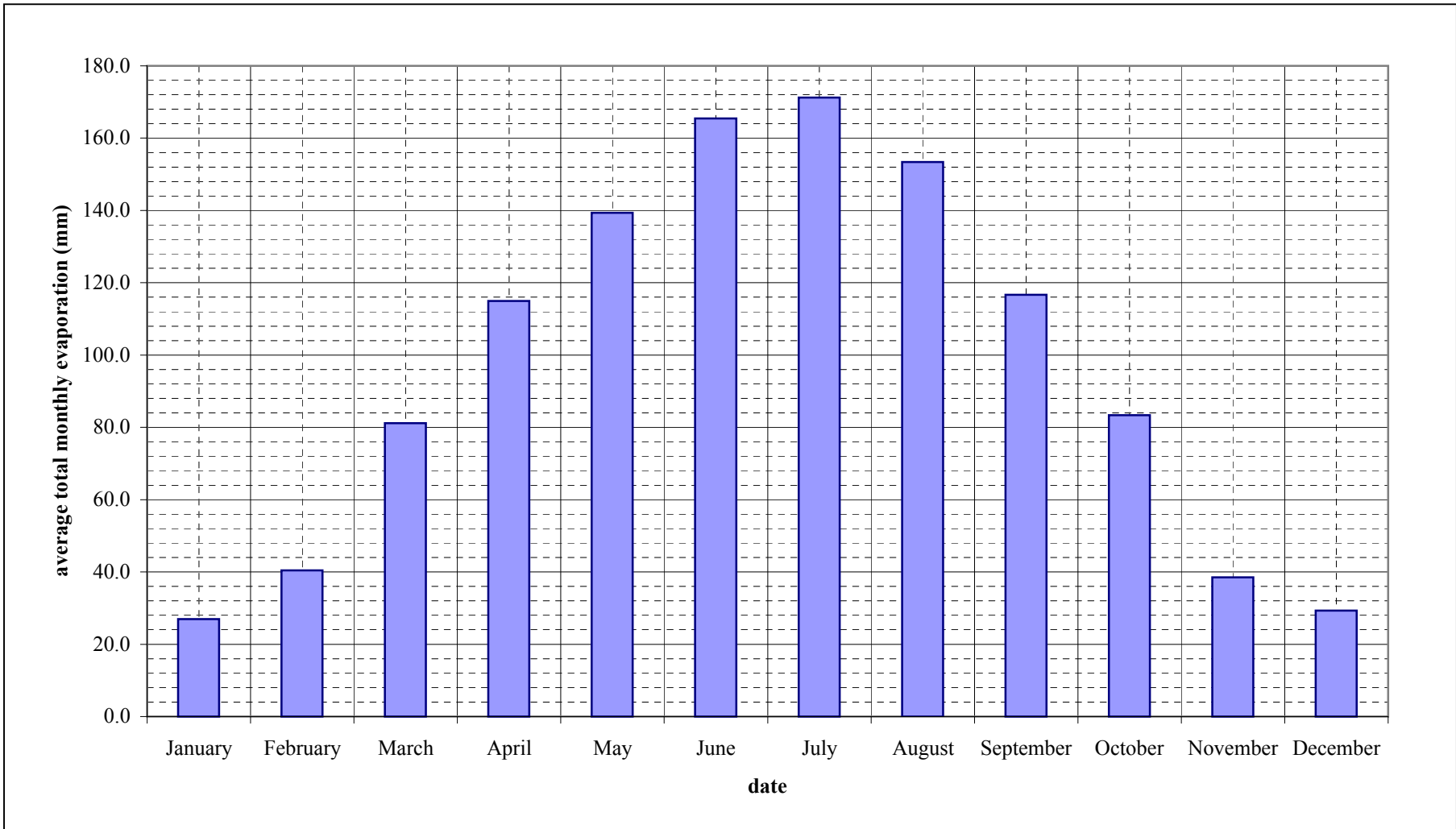
Notes: Missing data from 27-Mar-1994 to 1-Jun-1994. Computed as a function of measured net radiation, air temperature, wind speed, and relative humidity data from CIMIS weather gage #109, Carneros, CA. Methodology reference: Applied Hydrology, Chow/Maidment/Maye, Copyright 1998 McGraw-Hill; and, Millero and Poisson 1981 found in Surface Water Quality Modeling, Chapra, Copyright 1997 McGraw-Hill

figure 5-8

**Evaporation, daily totals, zero salinity
1993-2001**



PWA #: 1174-8



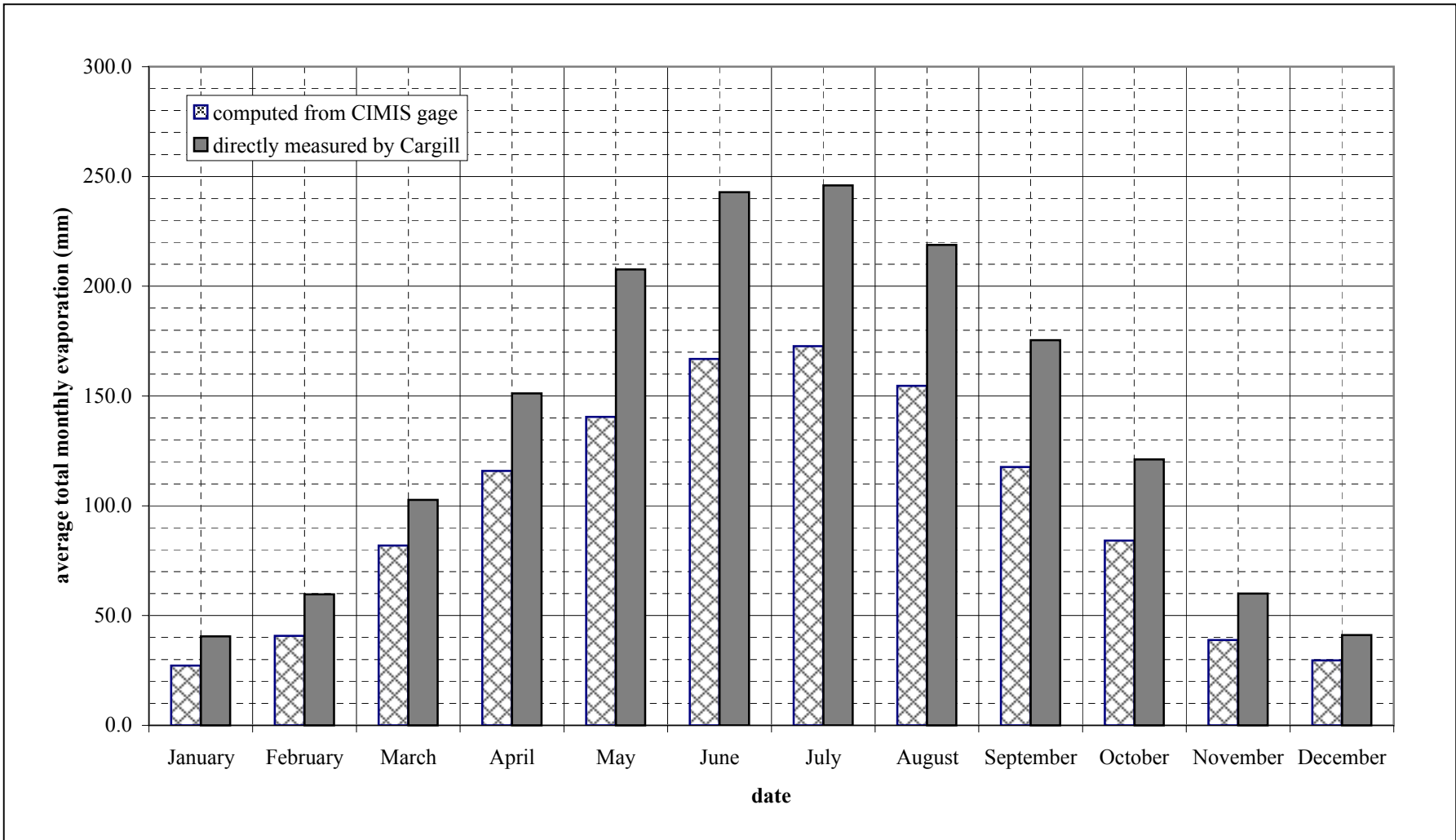
Source: DWR-CIMIS weather station #109, Carneros, CA
 Notes: Monthly averages computed from CIMIS weather station data for April 1993-April 2001. Evaporation computed from measured net radiation, air temperature, wind speed, and relative humidity data from CIMIS weather gage #109, Carneros, CA. Methodology reference: Applied Hydrology, Chow/Maidment/Maye, Copyright 1998 McGraw-Hill; and, Millero and Poisson 1981 found in Surface Water Quality Modeling, Chapra, Copyright 1997 McGraw-Hill

figure 5-9

**Evaporation, monthly averages
 averaged over 1993-2001**



PWA #:1174-8



Source: DWR-CIMIS weather station #109, Carneros, CA; and Cargill (Leslie Salt Co.) weather station at Napa salt ponds, daily gage data.

Notes: Monthly averages computed from CIMIS weather station data for April 1993-April 2001, from measured net radiation, air temperature, wind speed, and relative humidity data.

Methodology reference: Applied Hydrology, Chow/Maidment/Mayes, Copyright 1998 McGraw-Hill; and, Millero and Poisson 1981 found in Surface Water Quality Modeling, Chapra, Copyright 1997 McGraw-Hill

figure 5-10

Comparison of Evaporation from CIMIS and Cargill, monthly averages for 1993-2001



PWA #: 1174-8