

figure 6-1

Napa Sonoma Marsh Restoration Feasibility Study – Phase 2 Stage 1
Mare Island Strait Dredged Volumes
Mare Island, Mare Island Strait,
NSY Mare Island





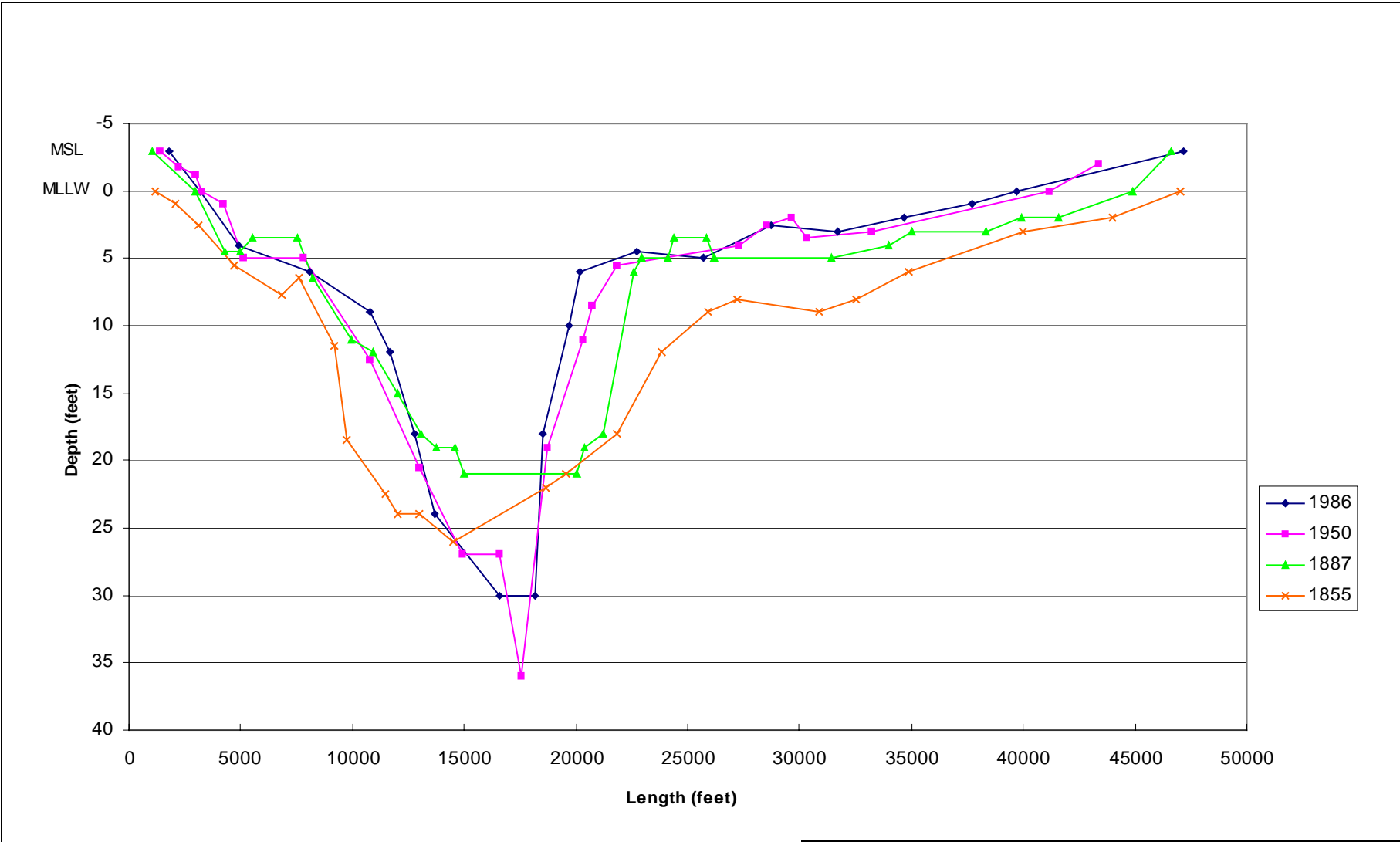
Source: Original image from ASTER (<http://asterweb.jpl.nasa.gov/default.htm>)

figure 6-2


Napa Sonoma Marsh Restoration Feasibility Study – Phase 2 Stage 1

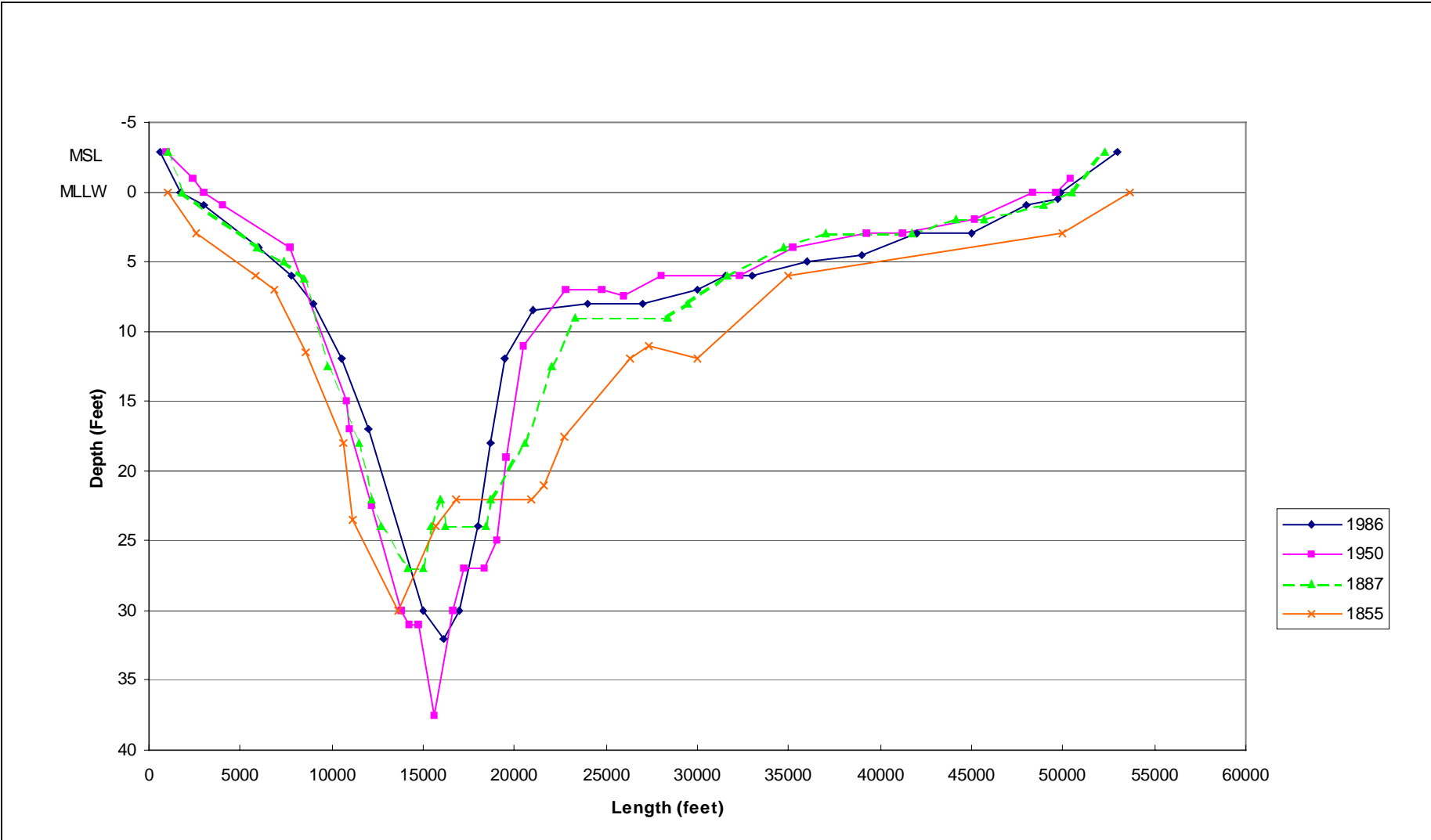
Profile Locations in San Pablo Bay





Note: Viewed in direction of ebb flow

figure 6-3
 Napa Sonoma Marsh Restoration Feasibility Study – Phase 2 Stage 1
San Pablo Bay Profile – Section G
 PWA 1545/46



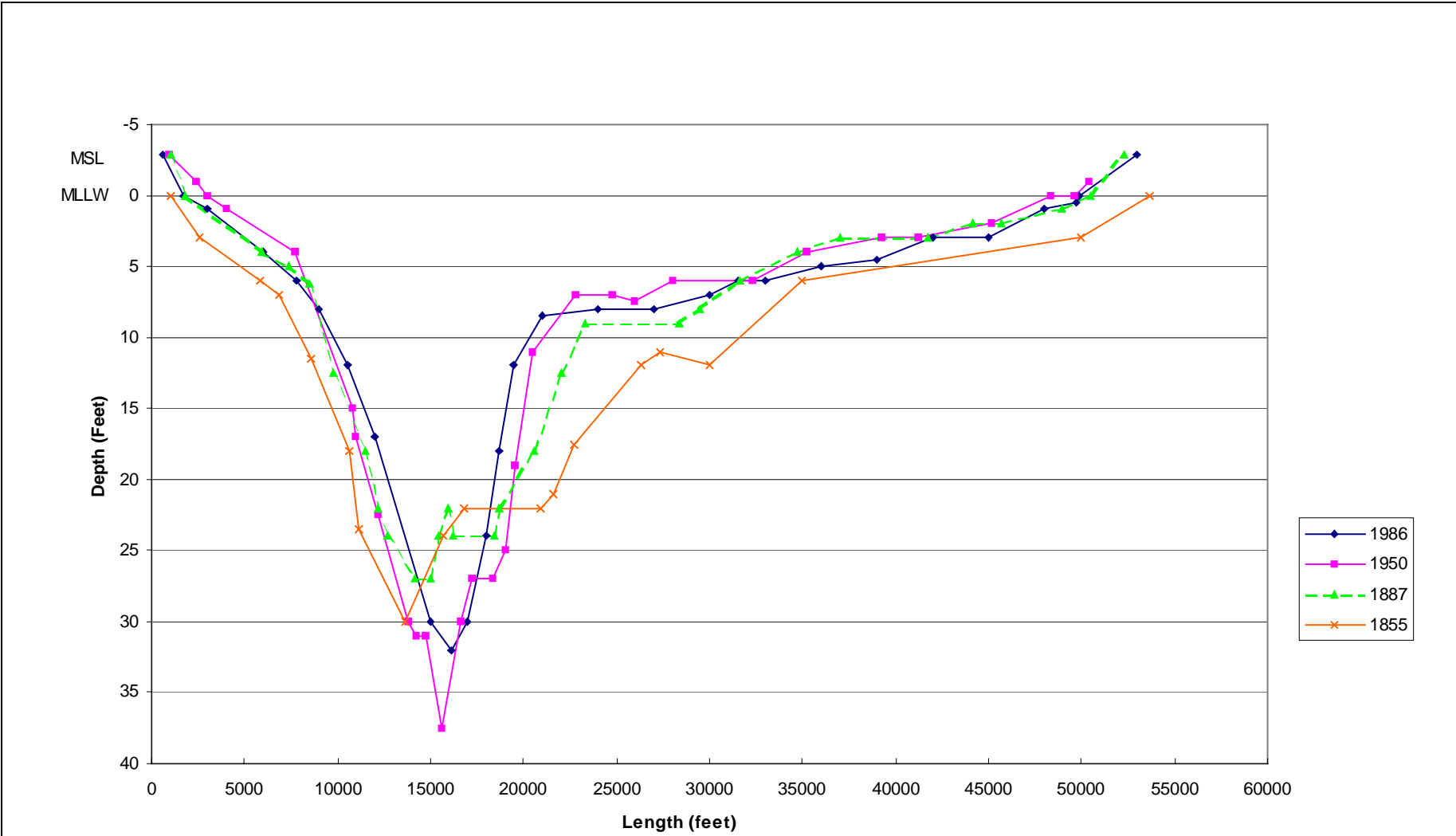
Note: Viewed in direction of ebb flow

figure 6-4


Napa Sonoma Marsh Restoration Feasibility Study – Phase 2 Stage 1

San Pablo Bay Profile – Section H

PWA 1545/46



Note: Viewed in direction of ebb flow

figure 6-5
 Napa Sonoma Marsh Restoration Feasibility Study – Phase 2 Stage 1
San Pablo Bay Profile – Section J
 PWA 1545/46



Source: Figure adapted from Warner, 2001

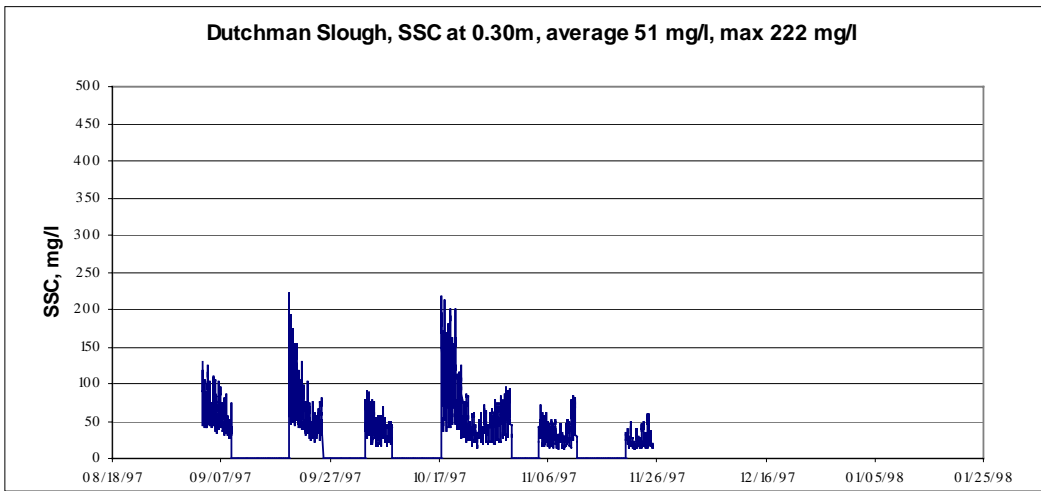
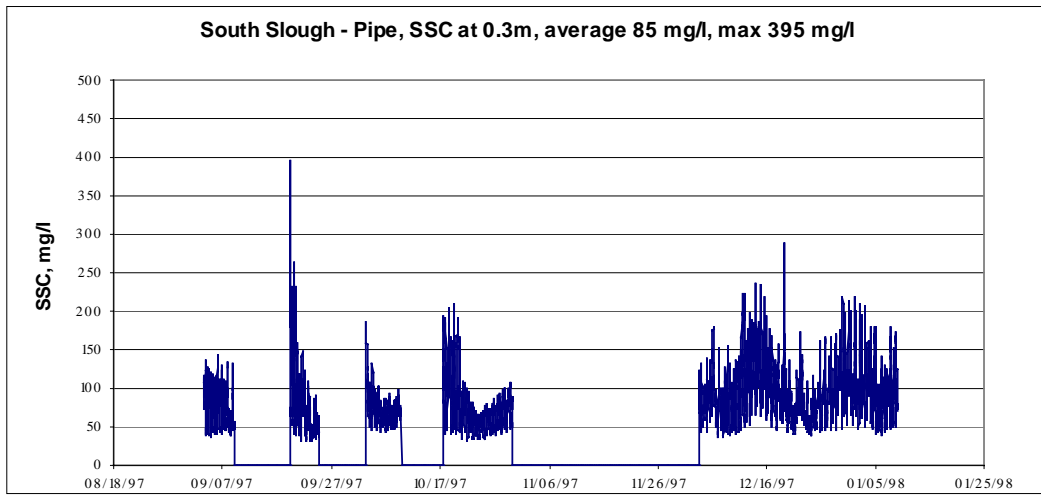
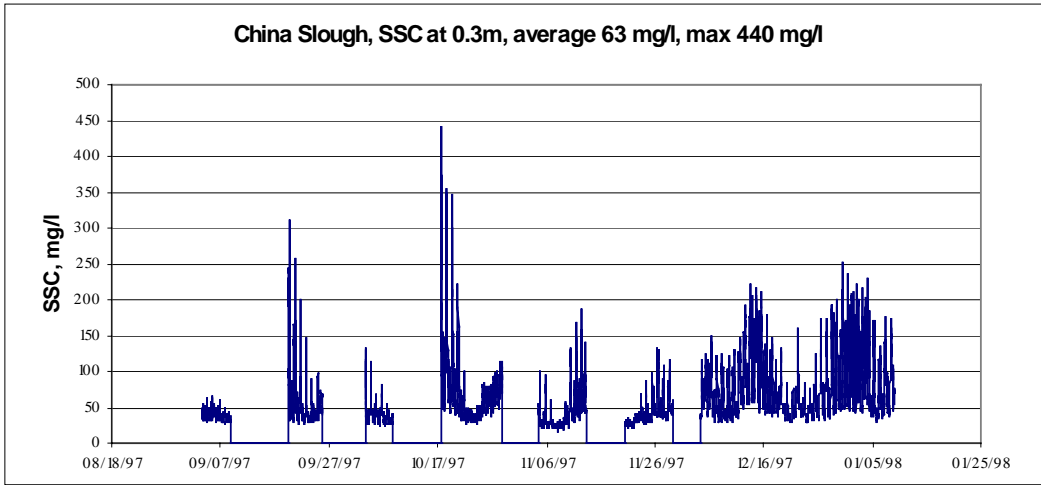
figure 6-6

Napa Sonoma Marsh Restoration Feasibility Study – Phase 2 Stage 1

**Suspended Sediment
Measurement Locations**



#1545/46

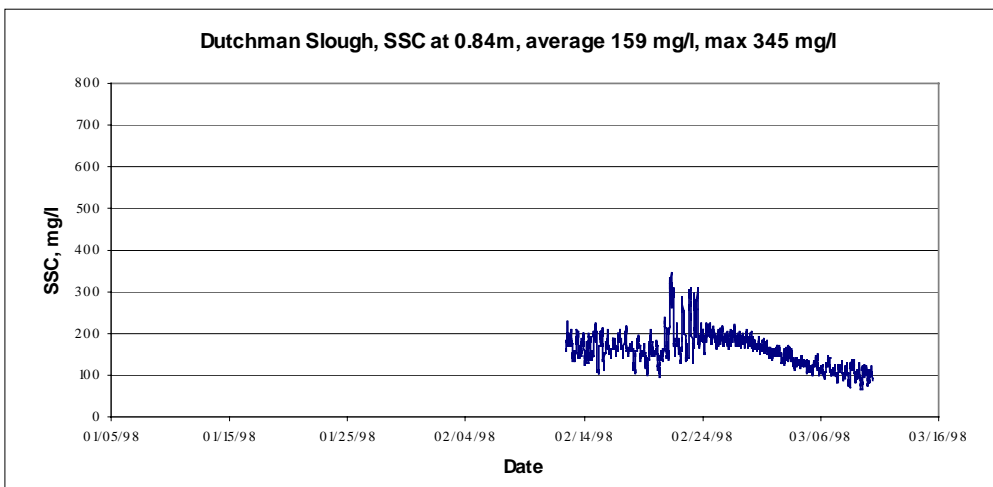
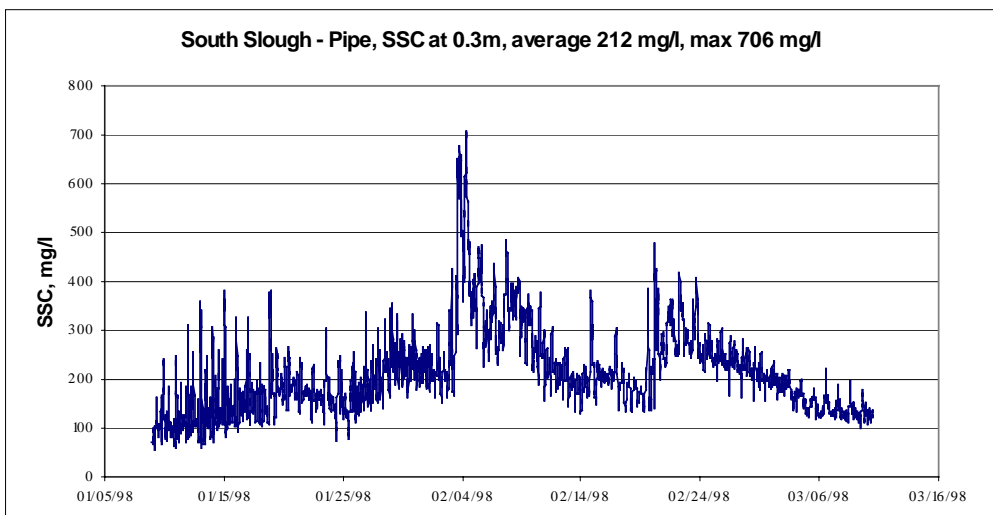
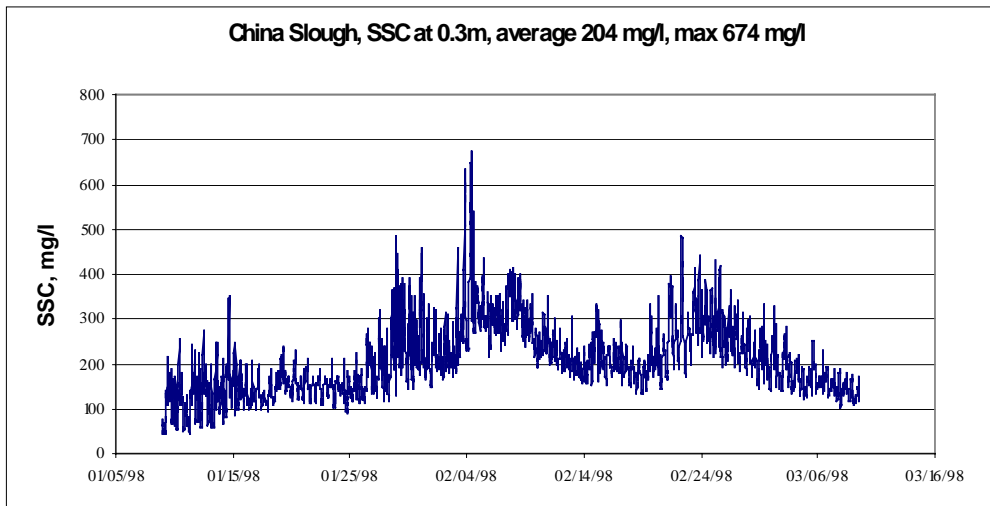


Source: Data from Warner, 2001

figure 6-7
 Napa Sonoma Marsh Restoration Feasibility Study – Phase 2 Stage 1
**Suspended Sediment Concentrations at
 China, South and Dutchman Slough,
 Aug – Dec 1997**



#1545/46



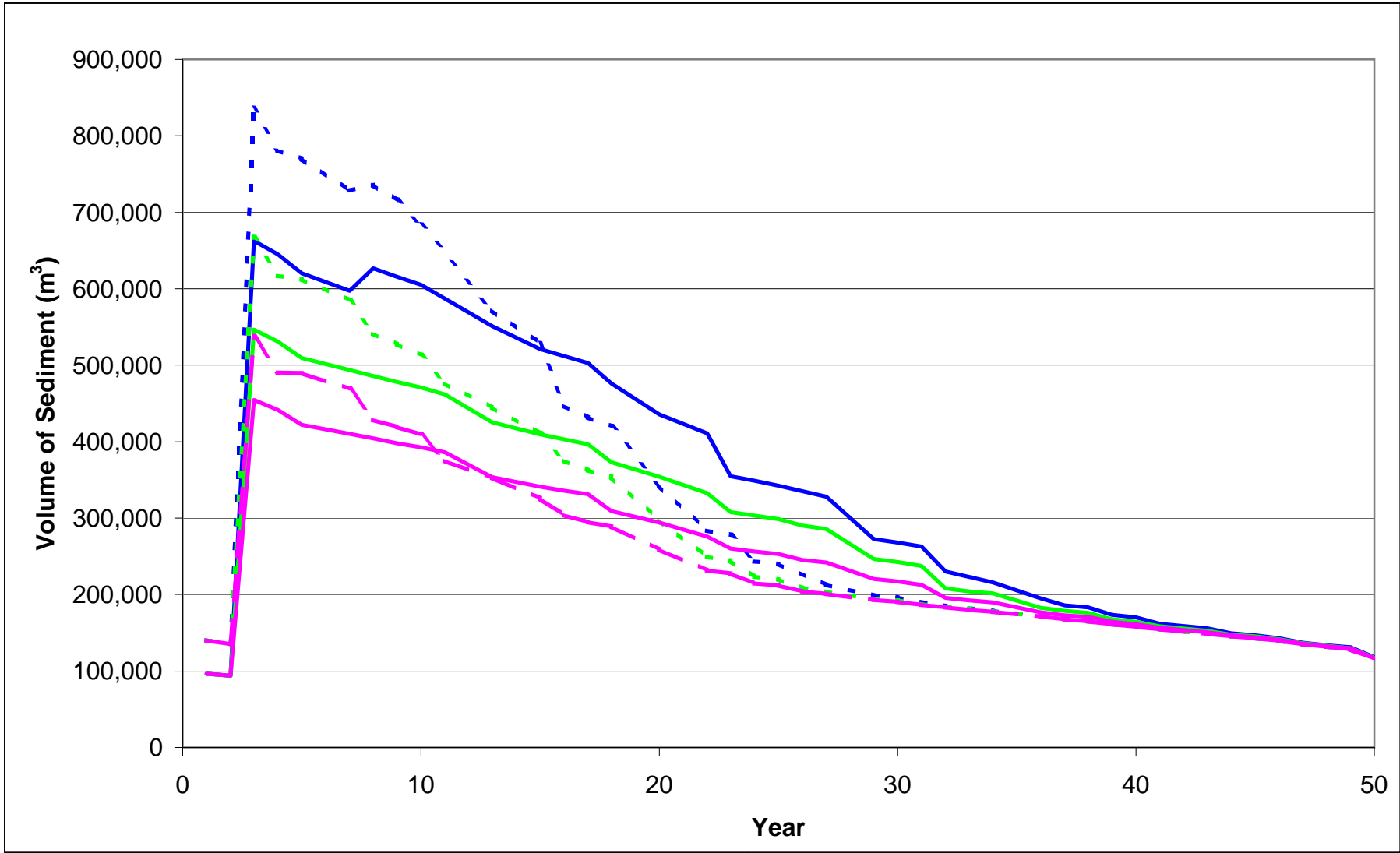
Source: Data from Warner, 2001

figure 6-8

Napa Sonoma Marsh Restoration Feasibility Study – Phase 2 Stage 1
**Suspended Sediment Concentrations at
 China, South and Dutchman Slough,
 Jan – March 1998**



#1545/46



— Alternative 1, No Design - - - Alternative 1, With Design
 — Alternative 2, No Design - - - Alternative 2, With Design
 — Alternative 3, No Design - - - Alternative 3, With Design
 NOTE: Demands are calculated assuming a SSC of 125 mg/L

figure 6-9

Napa Sonoma Marsh Restoration Feasibility Study Phase 2 Stage

Sediment Demand

PWA

Ref # 1545/46