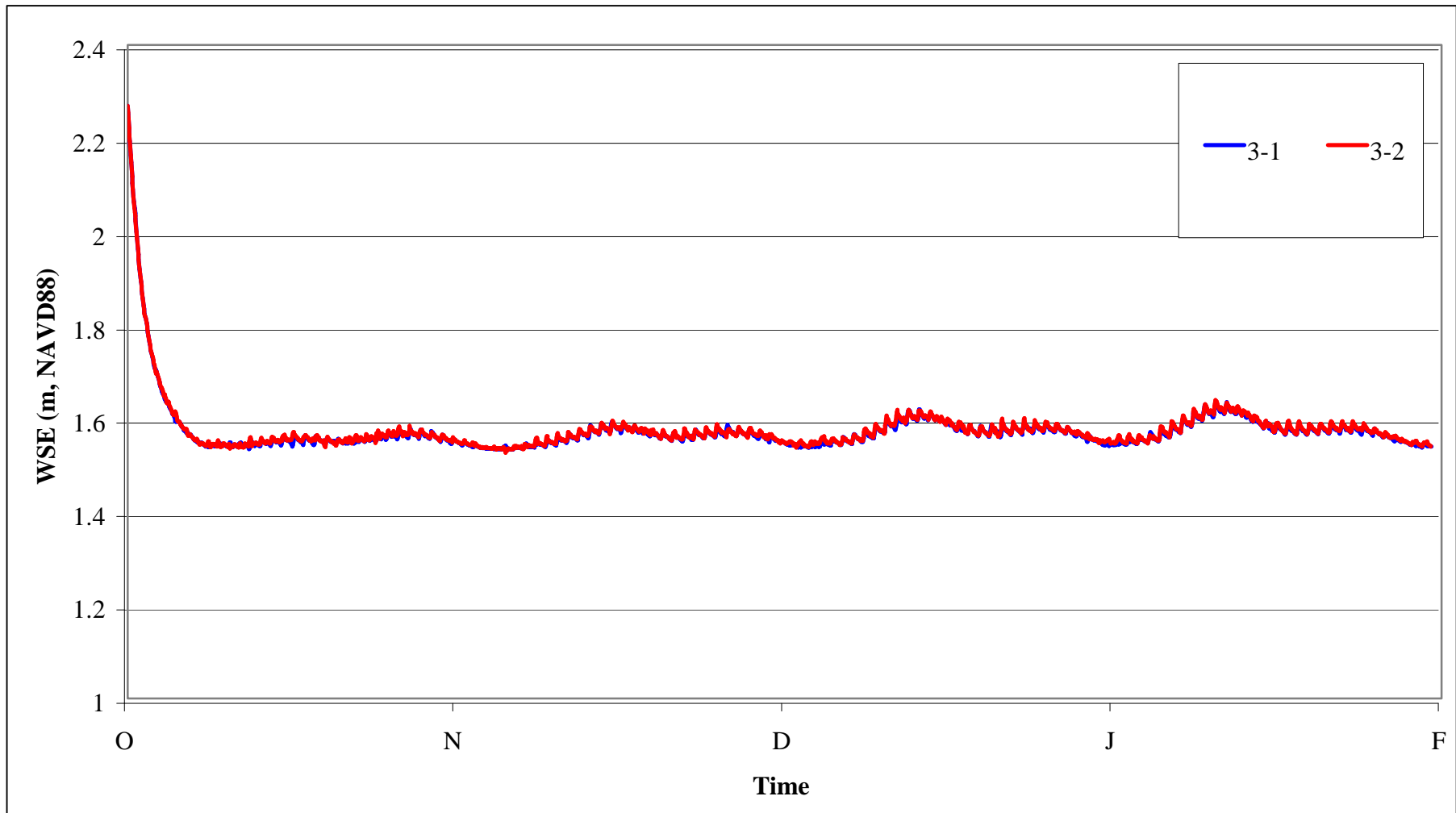


*figure 5-55*

*Napa-Sonoma Marsh Restoration Feasibility Study - Phase 2 Stage 1*

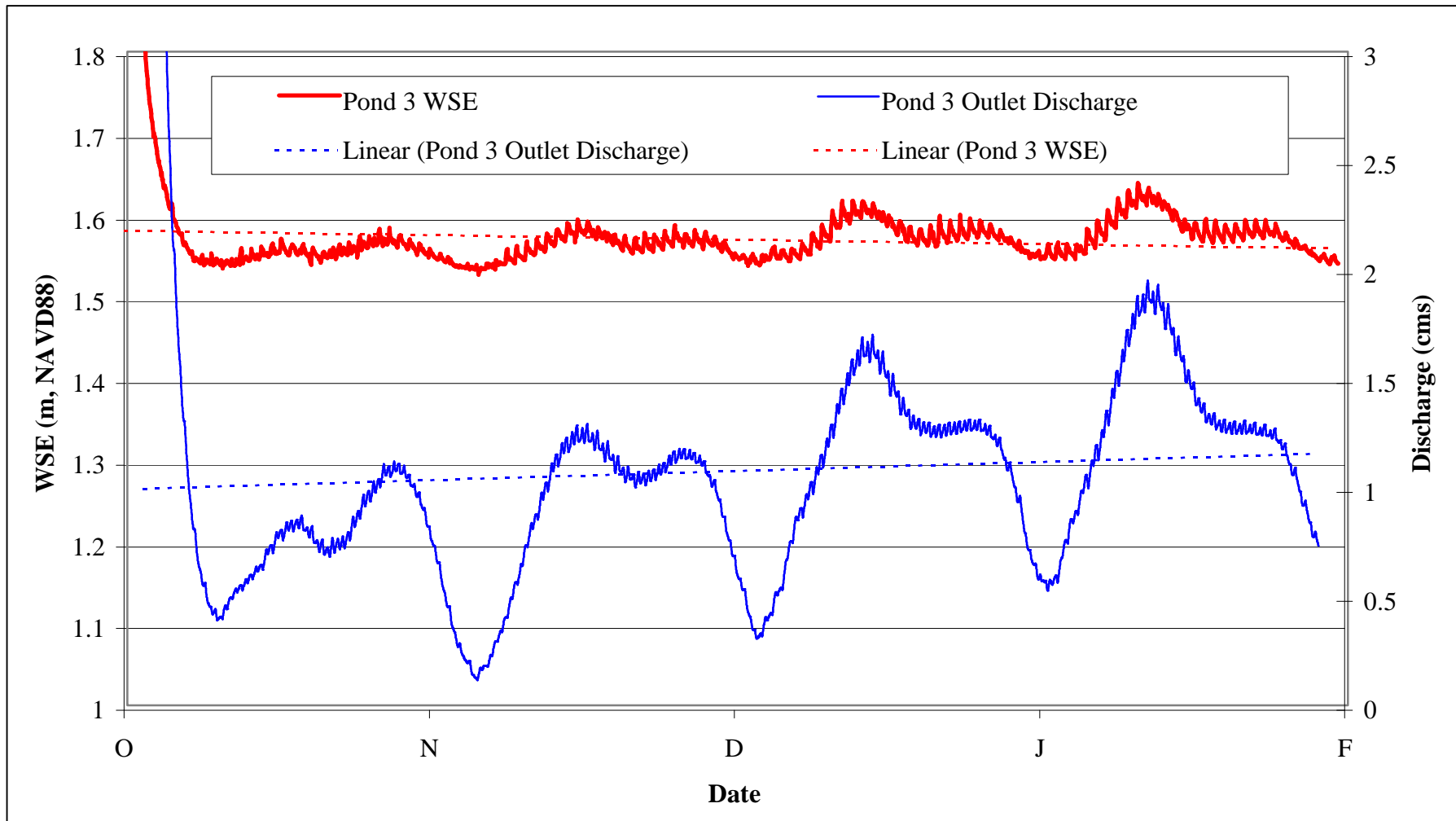
**Pond Salinity: Alternative 2A**



*figure 5-56*

*Napa-Sonoma Marsh Restoration Feasibility Study - Phase 2 Stage 1*

**Pond WSE: Alternative 2A**



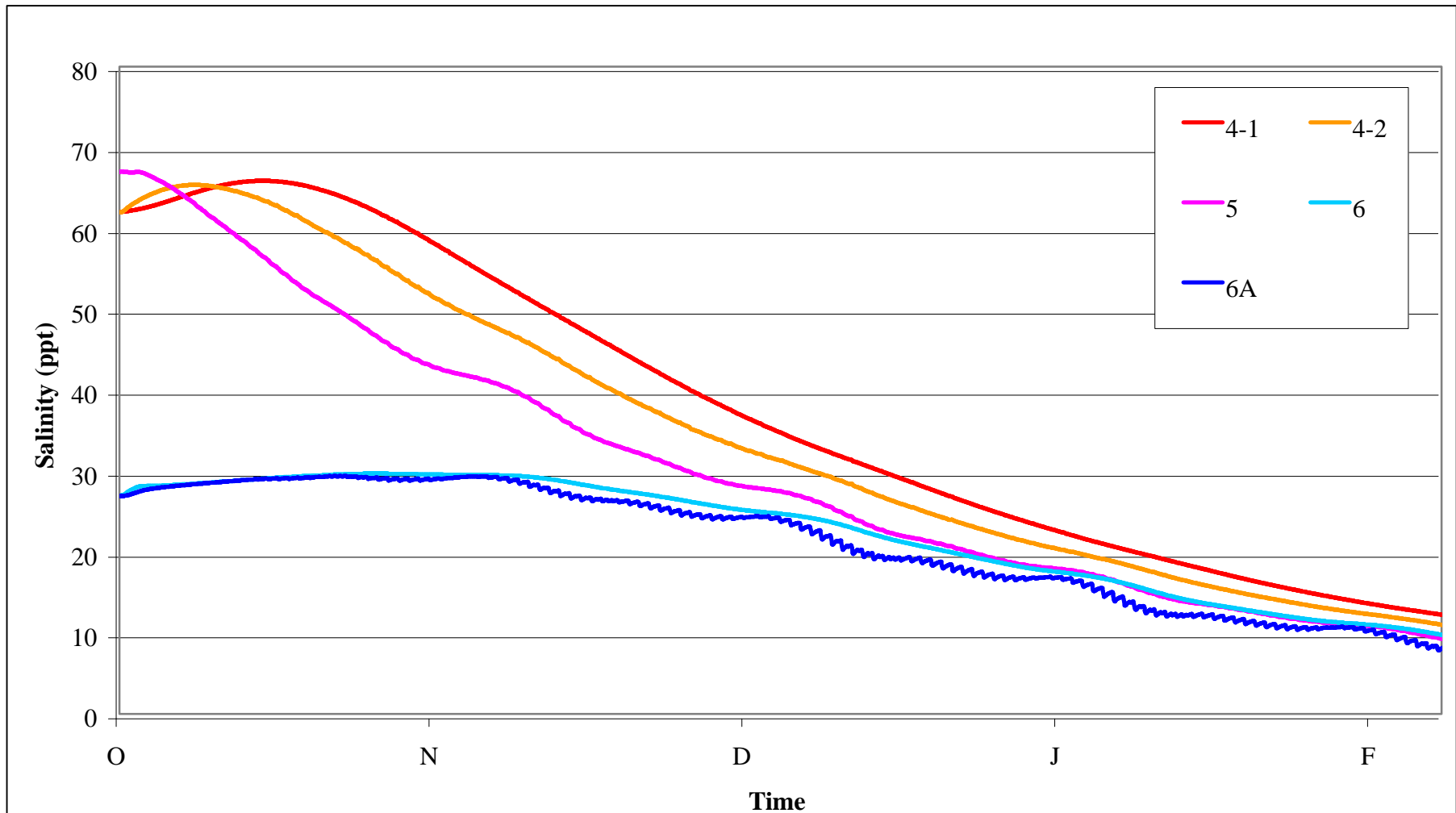
Notes: 4-day moving average of discharge from Pond 3.

figure 5-57

Napa-Sonoma Marsh Restoration Feasibility Study - Phase 2 Stage 1  
**Average Pond WSE and Discharge - Alternative 2A**

#1545/46





Notes: Discharge from Pond 4 via 2 x 48-inch culverts. Pond 5 and 6A inlets consists of 2 x 48-inch culverts each.

*figure 5-58*

*Napa-Sonoma Marsh Restoration Feasibility Study - Phase 2 Stage 1*  
**Pond Salinity: Alternative 2B**

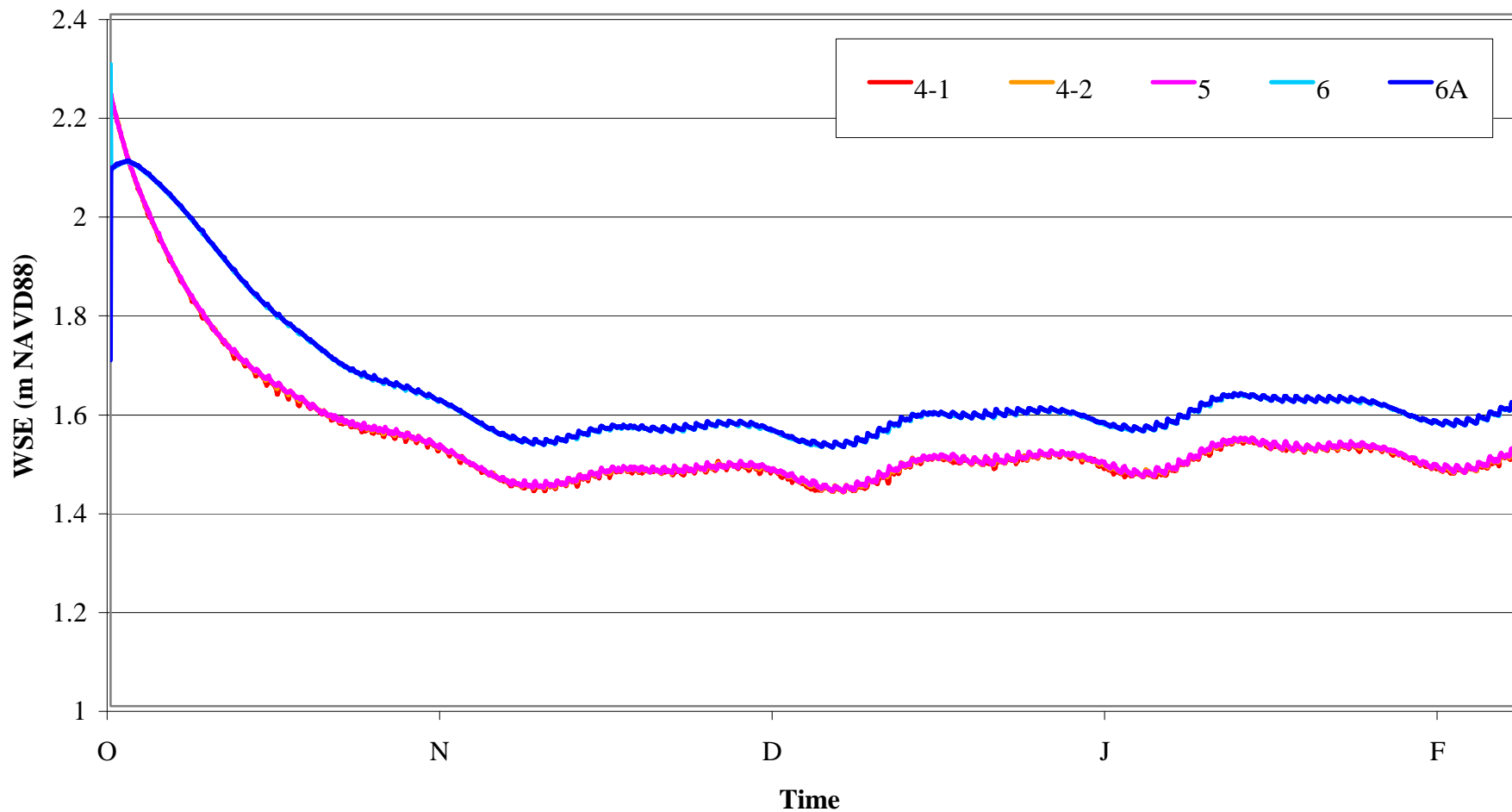
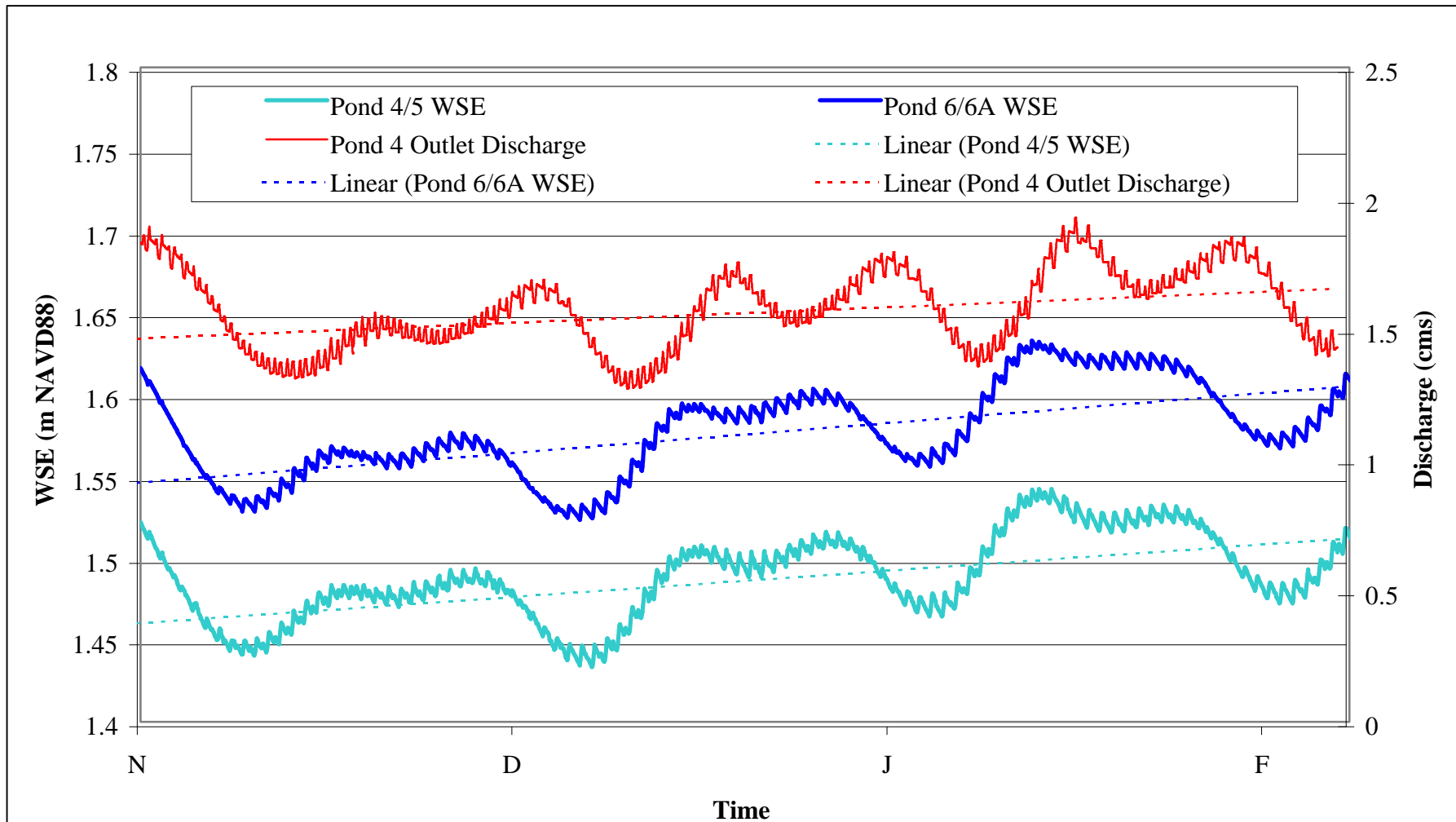


figure 59

Napa-Sonoma Marsh Restoration Feasibility Study - Phase 2 Stage 1  
**Pond WSE: Alternative 2B**



Notes: 4-day moving average applied to P4 outlet. After initial transients.

figure 5-60

Napa-Sonoma Marsh Restoration Feasibility Study - Phase 2 Stage 1  
**Average WSE and Discharge - Alternative 2B**