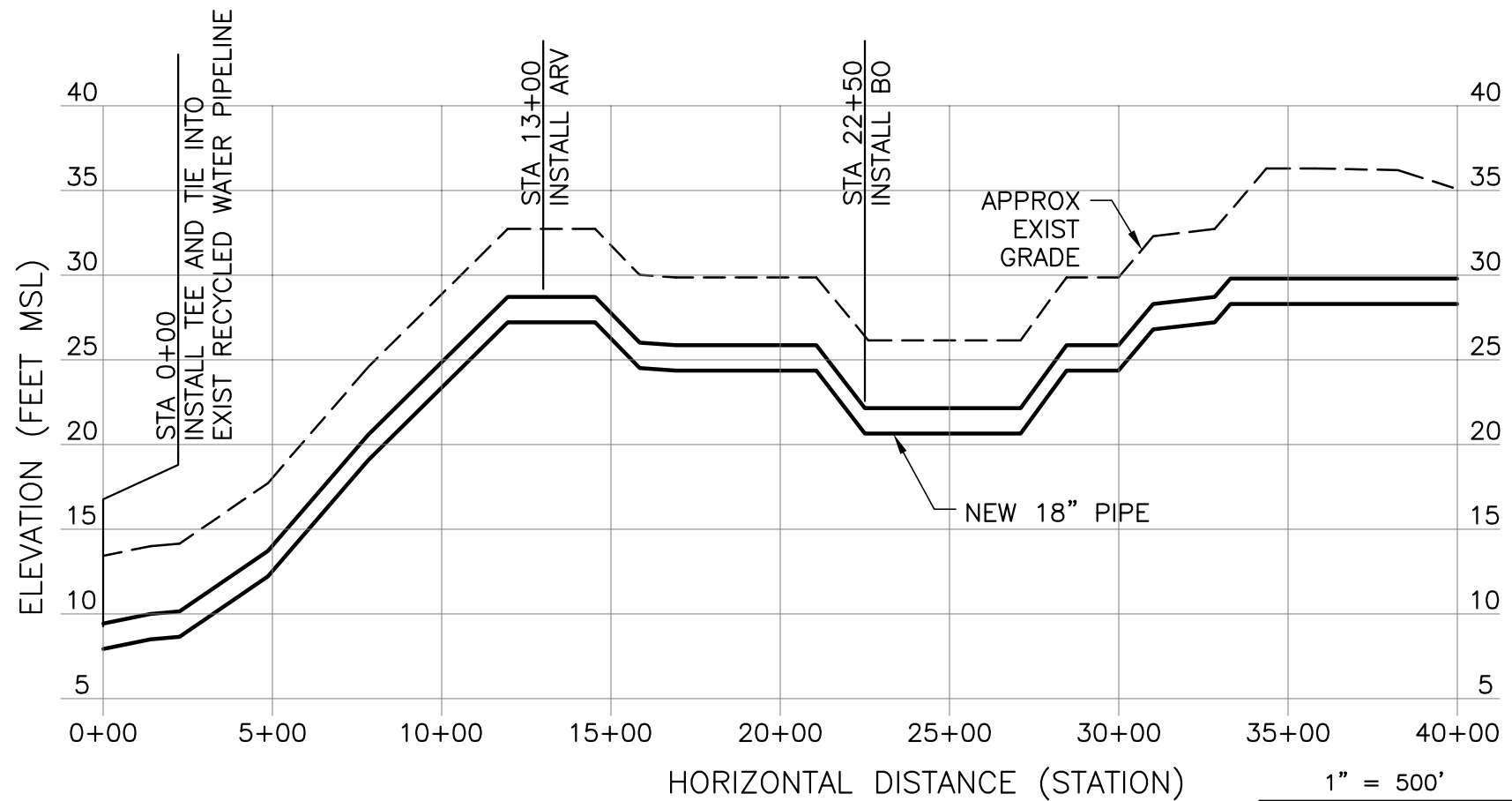
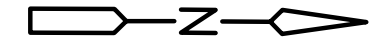
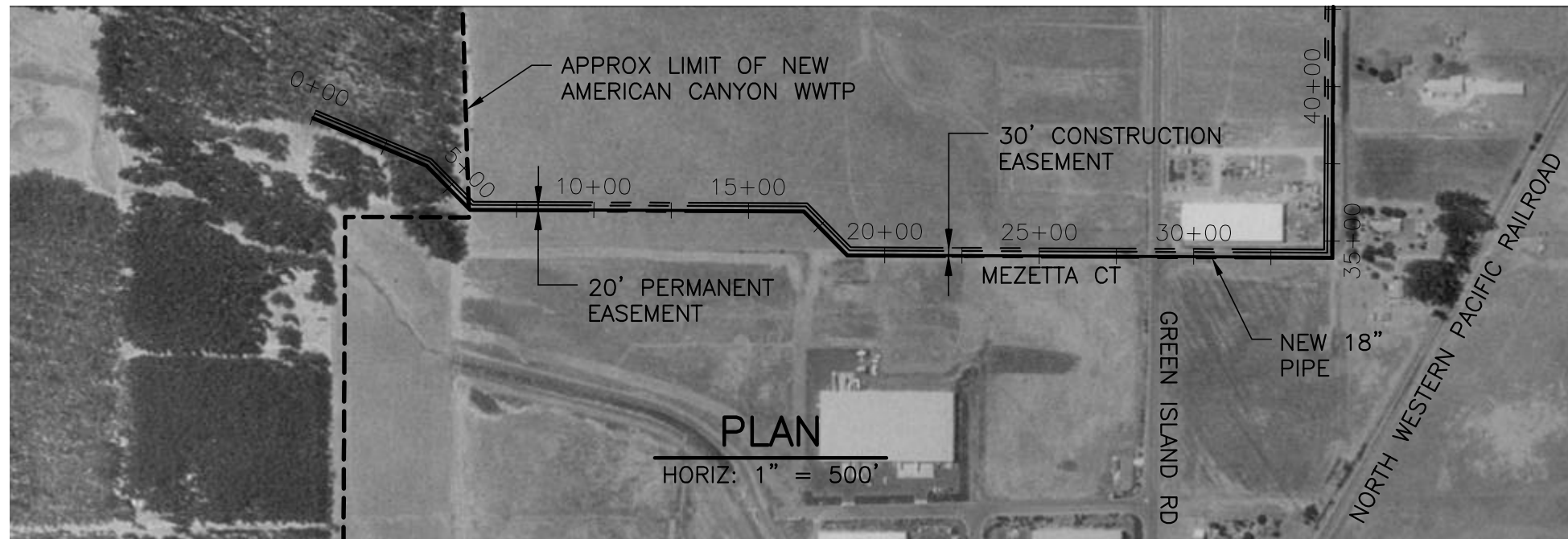


\\wieser1\cadd\ACAD2000\8131\34877\American Canyon\fig\ACSD-PIPELINE-001 03/05/03 11:36 talbotwk XREES: 1117BRDR, ACSD-PIPELINE-PL000

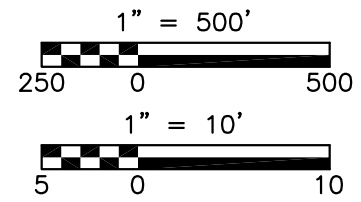


NOTES:

- 1. ALL STATIONS ARE APPROXIMATE.
- 2. EXISTING SURFACE TOPOGRAPHY OBTAINED FROM USGS MAPS.

**PROFILE**

HORIZ: 1" = 500'  
VERT: 1" = 10'



Sonoma County Water Agency	
NAPA-SONOMA SALT MARSH RESTORATION PROPOSED AMERICAN CANYON PIPELINE	
DATE: March 2003	SHEET: 1 OF 5